

Photos 1 – 6, Various Details of Damage to Reformer Furnace

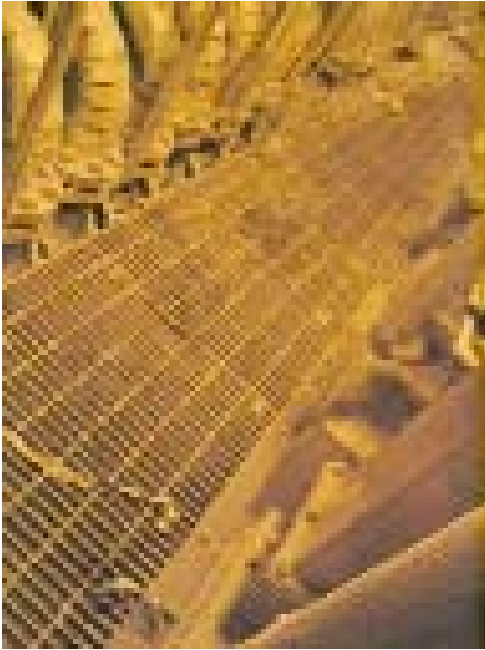


Photo 1 - General arrangement radiant tube inlets



Photo 2 - Pre incident general radiant tube arrangement



Photo 3 - Post incident damage. Note displaced hangers and counter weights



Photo 4 - External damage



Photo 5 - Tube 161 lifted approximately 16 ft (view looking up)



Photo 6 - Internal condition of radiant section