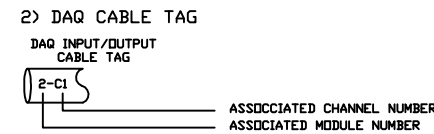
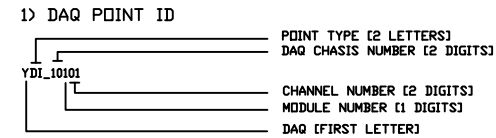


# ELECTRICAL DRAWING INDEX

DWG NO.	DRAWING DESCRIPTION
PL00093-11-01	ELECTRICAL DRAWING INDEX
PL00093-11-02	TRAILER ELECTRICAL EQUIPMENT LAYOUT
PL00093-11-03	SYSTEM SCHEMATIC
PL00093-11-04	ELECTRICAL POWER DISTRIBUTION
PL00093-11-05	EXPLOSION-PROOF ENCLOSURE LAYOUT
PL00093-11-06	DAQ SYSTEM & NETWORK LAYOUT
PL00093-11-07	DAQ POINTS LIST
PL00093-11-08	DAQ MODULE 1 DI/DO WIRING DETAILS
PL00093-11-09	DAQ MODULE 2 AI WIRING DETAILS
PL00093-11-10	DAQ MODULE 3 TT WIRING DETAILS
PL00093-11-11	DAQ MODULE 4 DO WIRING DETAILS
PL00093-11-12	FIRE DETECTION WIRING DETAILS
PL00093-11-13	GAS DETECTION WIRING DETAILS
PL00093-11-14	EMERGENCY SHUTDOWN (ESD) CIRCUIT WIRING DETAILS
PL00093-11-15	PNEUMATIC CONTROL SYSTEM SCHEMATIC
PL00093-11-16	INTRINSIC SAFETY DEVICE SCHEDULE
PL00093-11-17	BILL OF ELECTRICAL MATERIALS

## DRAWING NOTES



- 3) ACRONYMS
- DAQ - DATA ACQUISITION SYSTEM
  - Ir-DA - INFRARED DATA ASSOCIATION
  - HMI - HUMAN-MACHINE INTERFACE

## 4) INTRINSIC SAFETY

**Hazardous (Classified) Location**  
Class 1, Division 2, Group B

**INTRINSICALLY SAFE APPARATUS WITH ENTITY PARAMETERS**

$V_{max} \text{ (or } U_i) \geq V_{oc} \text{ (or } U_o)$   
 $I_{max} \text{ (or } I_i) \geq I_{sc} \text{ (or } I_o)$   
 $C_i + C_{cable} \leq C_a \text{ (or } C_o)$   
 $L_i + L_{cable} \leq L_a \text{ (or } L_o)$   
 Lcable/Rcable verification (See note 5)

OR

**SIMPLE APPARATUS**

- Notes to Intrinsic Safety Wiring:
- The maximum unclassified location voltage,  $U_m$ , is 250 V ac/dc.
  - Barrier ground shall be connected to a grounding electrode ANSI/NFPA 70, Articles 504. The resistance of the ground path must be less than 1 ohm. Barrier grounding is established on the standard 35mm Din Rail bonded to the ground electrode (AWG#10).
  - Barriers shall not be connected any device which uses or generates internally any voltage in excess of 250Vrms or DC unless the device has been determined to adequately isolate the voltage from the barrier.
  - The installation must be in accordance with the Class 1, Division 2 wiring methods of National Electrical Code, NFPA 70, Articles 504 and 505, and ANSI/ISA-RP12.06.01, Canadian Electrical Code C22.1 or in accordance with the authority having the jurisdiction.
  - Simple Apparatus: An electrical component or combination of components of simple construction with well defined electrical parameters that does not generate more than 1.5 volts, 100 milliamps, and 25 milliwatts, or a passive component that does not dissipate more than 1.3 watts.
  - $L_i$  may be greater than  $L_a$  and the cable length restrictions due to cable inductance ( $L_{cable}$ ) can be ignored if both of the following conditions are met:  
 $L_a/R_a \text{ (or } L_o/R_o) \geq L_i/R_i$   
 $L_a/R_a \text{ (or } L_o/R_o) \geq L_{cable}/R_{cable}$

NO.	REMARKS	DATE	DRAWN	CHECKED	APPROVED	NO.	REMARKS	DATE	AUTHOR	REF#	VERSION
0	ISSUED FOR INTERNAL REVIEW	12FEB2015	BW	GM	GM						
1	ISSUED FOR SECOND REVIEW	15MAR2015	BW	GM	GM						
2	ISSUED FOR MATERIAL PROCUREMENT	01MAY2015	BW	GM	GM						
3	ISSUED FOR CONSTRUCTION AFTER TRAILER INSPECTION	08MAY2015	BW	GM	GM						
4	AS-BUILT ISSUED FOR REVIEW & APPROVAL	31AUG2015	BW	GM	GM						

PROJECT NUMBER: PL-00742	
DRAWING NUMBER: PL-00742-11-01	
SHEET: 1 OF 1	PROJECT TITLE: HYDROGEN STATION TESTING DEVICE
	DRAWING TITLE: ELECTRICAL DRAWING INDEX

**UTILITY ROOM**

YDI10103 - UTILITY RM HYDROGEN PROBE FAILED ALARM  
 YAI10205 - UTILITY RM GAS LEVEL (%LEL)  
 FIRE HEAT DETECTOR TO ESD CIRCUIT (SEE DWG#PL-00742-11-13) AND GAS ALARM TO ESD CIRCUIT (SEE DWG#PL-00742-11-13 FOR DETAILS)

**LOCKABLE BOX FOR SOLENOID BYPASS VALVES (ABOVE)**

MANUAL BYPASS VALVES (TYPICAL OF 5)  
 INTRINSIC SAFETY J/B #1 (BELOW)  
 TERMINAL STRIP TS-2

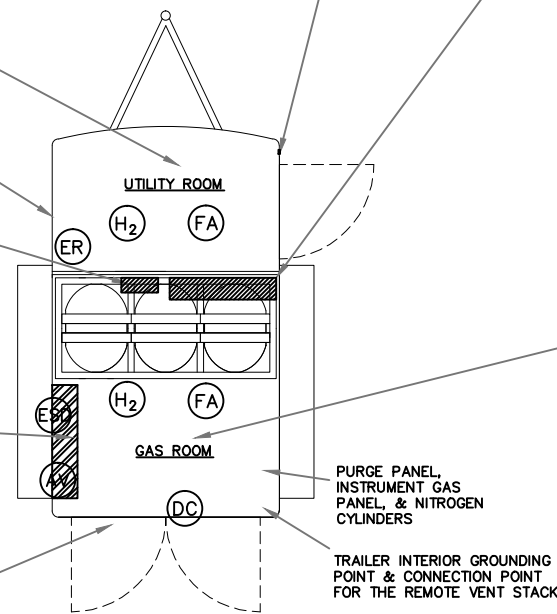
**OPERATOR CONTROL PANEL**

HUMAN MACHINE INTERFACE (HMI)  
 YDO10402 - AUDIBLE ALARM  
 YDO10401 - VISUAL STROBE ALARM  
 YDI10110 - AV ALARM SILENCE BUTTON  
 NOZZLE RECEPTACLE  
 IrDA TRANSMITTER  
 EMERGENCY SHUTDOWN PUSH BUTTON  
 (SEE DWG# PL00742-11-03 FOR DETAILED LAYOUT) & ESD BUTTON TO ESD CIRCUIT (SEE DWG#PL-00742-11-14)

YTI 10310 - AMBIENT TEMPERATURE SENSOR

**PASS-THRU FOR ELECTRICAL POWER**  
 120VAC 15A ELECTRICAL POWER  
 EXTENSION CORD (80 FT)

TRAILER EXTERIOR  
 GROUNDING POINT



**EXPLOSION-PROOF ENCLOSURE**

DAQ20103- cDAQ-9132 CHASSIS CPU  
 DAQ20104 - 24VDC 10AMP POWER SUPPLY CHASSIS 1  
 IOM20105 - MODULE 1: SINKING DIGITAL INPUT/SOURCING DIGITAL OUTPUT 32 CHANNELS  
 IOM20106 - MODULE 2: ANALOG CURRENT INPUT 16 CHANNELS  
 IOM20107 - MODULE 3: THERMOCOUPLE INPUT 16 CHANNELS  
 IOM20108 - MODULE 4: SOURCING DIGITAL OUTPUT 8 CHANNELS  
 YDO10400 - ESD cDAQ SHUTDOWN COMMAND  
 YDI10100 - ESD CIRCUIT MONITORING  
 YDI10101 - INSTRUMENT GAS PRESSURE SWITCH  
 YDO10101 - HYDROGEN RECEPTACLE: Electric Solenoid Valve to Pneumatic-Actuated Valve  
 YDO10102 - HYDROGEN TANK #1: Electric Solenoid Valve to Pneumatic-Actuated Valve  
 YDO10103 - HYDROGEN TANK #2: Electric Solenoid Valve to Pneumatic-Actuated Valve  
 YDO10104 - HYDROGEN TANK #3: Electric Solenoid Valve to Pneumatic-Actuated Valve  
 YDO10105 - GAS VENT LINE: Electric Solenoid Valve to Pneumatic-Actuated Valve  
 IrDA SIGNAL GENERATOR  
 RELAYS - R1, R2, R3, R4, & R-5  
 POWER SUPPLY - PS1 & PS2  
 TERMINAL STRIP - TS1 & TS2  
 FUSE BLOCKS - F1 to F12  
 INSTRUMENT GAS PRESSURE SWITCH - AS1  
 MAIN GAS SOLENOID VALVE - MAS1  
 SOLENOID VALVES - AS1 TO AS5  
 INTRINSIC BARRIERS - ISB1 to ISB21  
 (SEE DWG# PL-00742-11-05 FOR DETAILED LAYOUT)

**GAS ROOM**

YDI10104 - RECEPTACLE PNEUMATIC-ACTUATED VALVE END SWITCH  
 YDI10105 - HYDROGEN TANK #1 PNEUMATIC-ACTUATED VALVE END SWITCH  
 YDI10106 - HYDROGEN TANK #2 PNEUMATIC-ACTUATED VALVE END SWITCH  
 YDI10107 - HYDROGEN TANK #3 PNEUMATIC-ACTUATED VALVE END SWITCH  
 YDI10108 - PURGE VENT PNEUMATIC-ACTUATED VALVE END SWITCH  
 YAI10200 - RECEPTACLE - INLET PRESSURE  
 YAI10201 - HYDROGEN TANK #1 - LINE PRESSURE  
 YAI10202 - HYDROGEN TANK #2 - LINE PRESSURE  
 YAI10203 - HYDROGEN TANK #3 - LINE PRESSURE  
 YTI10300 - HYDROGEN TANK #1 - TANK INTERNAL TEMPERATURE A  
 YTI10301 - HYDROGEN TANK #1 - TANK INTERNAL TEMPERATURE B  
 YTI10302 - HYDROGEN TANK #1 - INLET GAS TEMPERATURE  
 YTI10303 - HYDROGEN TANK #2 - TANK INTERNAL TEMPERATURE A  
 YTI10304 - HYDROGEN TANK #2 - TANK INTERNAL TEMPERATURE B  
 YTI10305 - HYDROGEN TANK #2 - INLET GAS TEMPERATURE  
 YTI10306 - HYDROGEN TANK #3 - TANK INTERNAL TEMPERATURE A  
 YTI10307 - HYDROGEN TANK #3 - TANK INTERNAL TEMPERATURE B  
 YTI10308 - HYDROGEN TANK #3 - INLET GAS TEMPERATURE  
 YTI10309 - RECEPTACLE INLET GAS TEMPERATURE  
 YDI10109 - TRAILER GAS ROOM DOOR MONITOR  
 YDI10102 - GAS RM HYDROGEN PROBE FAILED ALARM  
 YAI10204 - GAS RM HYDROGEN LEVEL (%LEL)  
 HARDWIRED - FIRE HEAT DETECTOR TO ESD CIRCUIT (SEE DWG#PL-00742-11-13) AND GAS ALARM TO ESD CIRCUIT (SEE DWG#PL-00742-11-13 FOR DETAILS)

**TRAILER PLAN VIEW**


**LEGEND**

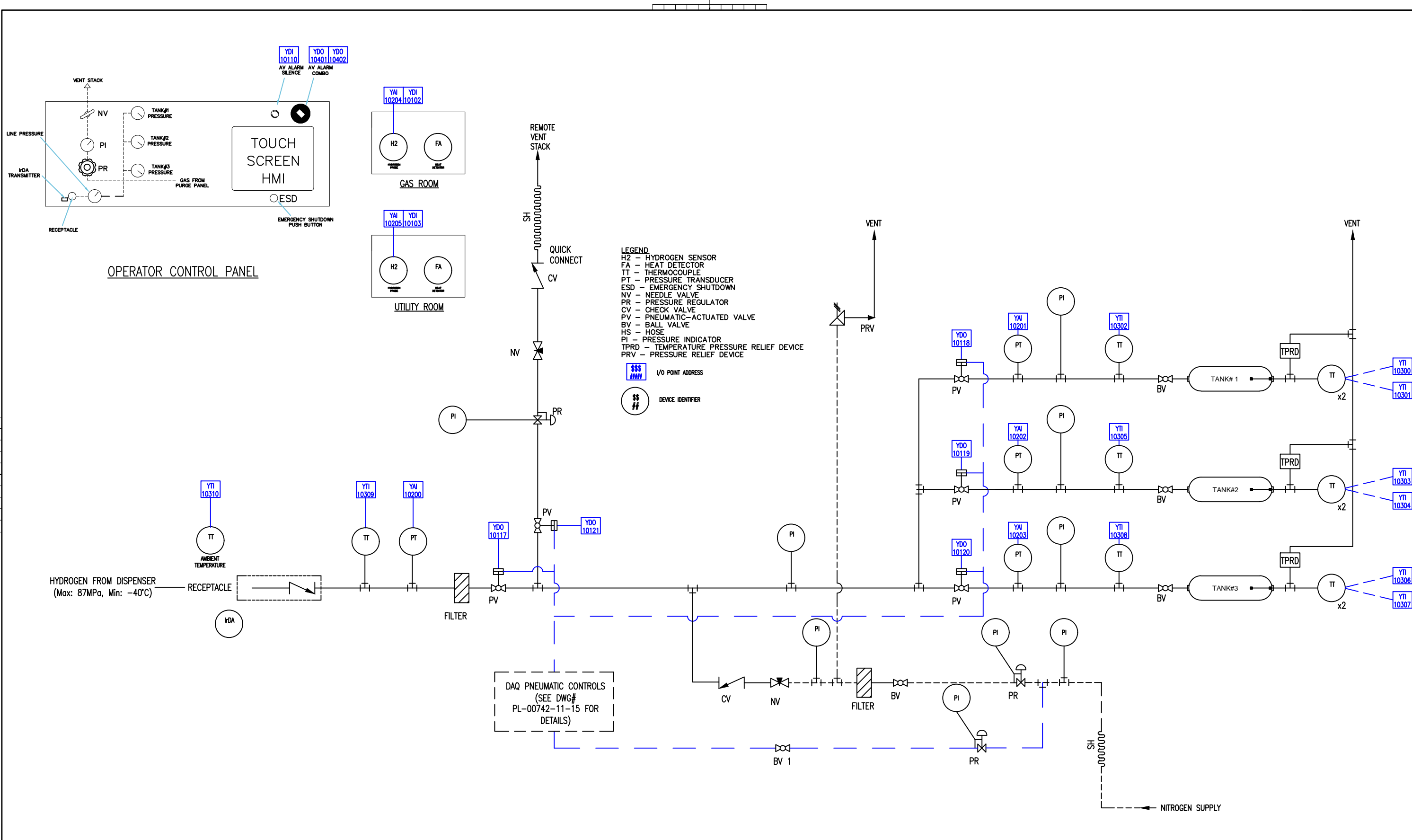
- (FA) FIRE ALARM HEAT DETECTOR
- (H<sub>2</sub>) HYDROGEN GAS DETECTION PROBE
- (ESD) EMERGENCY SHUTDOWN PUSH BUTTON
- (ER) ETHERNET RECEPTACLE (LAN)
- (AV) AUDIBLE/VISUAL ALARM
- (DC) DOOR CONTACT

**NOTE TO POWER UP THE SYSTEM**


THERE IS NO SWITCH IN THE TRAILER TO TURN ON/OFF THE SYSTEM. WHEN THE EXTENSION CORD IS PLUGGED INTO ELECTRICAL POWER SOURCE, THE SYSTEM WILL START UP AUTOMATICALLY INCLUDING THE cDAQ, HMI, HYDROGEN GAS DETECTORS, LED LIGHTS IN THE GAS ROOM & UTILITY ROOM, & AUDIBLE/VISUAL ALARM. THE cDAQ SYSTEM SHALL BE SHUTDOWN PROPERLY BEFORE DISCONNECTING THE EXTENSION CORD FROM THE POWER SOURCE.

NO.	REMARKS	DATE	DRAWN	CHECKED	APPROVED	NO.	REMARKS	DATE	AUTHOR	REF#	VERSION
0	ISSUED FOR INTERNAL REVIEW	12FEB2015	BW	GM	GM						
1	ISSUED FOR SECOND REVIEW	15MAR2015	BW	GM	GM						
2	ISSUED FOR MATERIAL PROCUREMENT	01MAY2015	BW	GM	GM						
3	ISSUED FOR CONSTRUCTION AFTER TRAILER INSPECTION	08MAY2015	BW	GM	GM						
4	AS-BUILT ISSUED FOR REVIEW & APPROVAL	31AUG2015	BW	GM	GM						

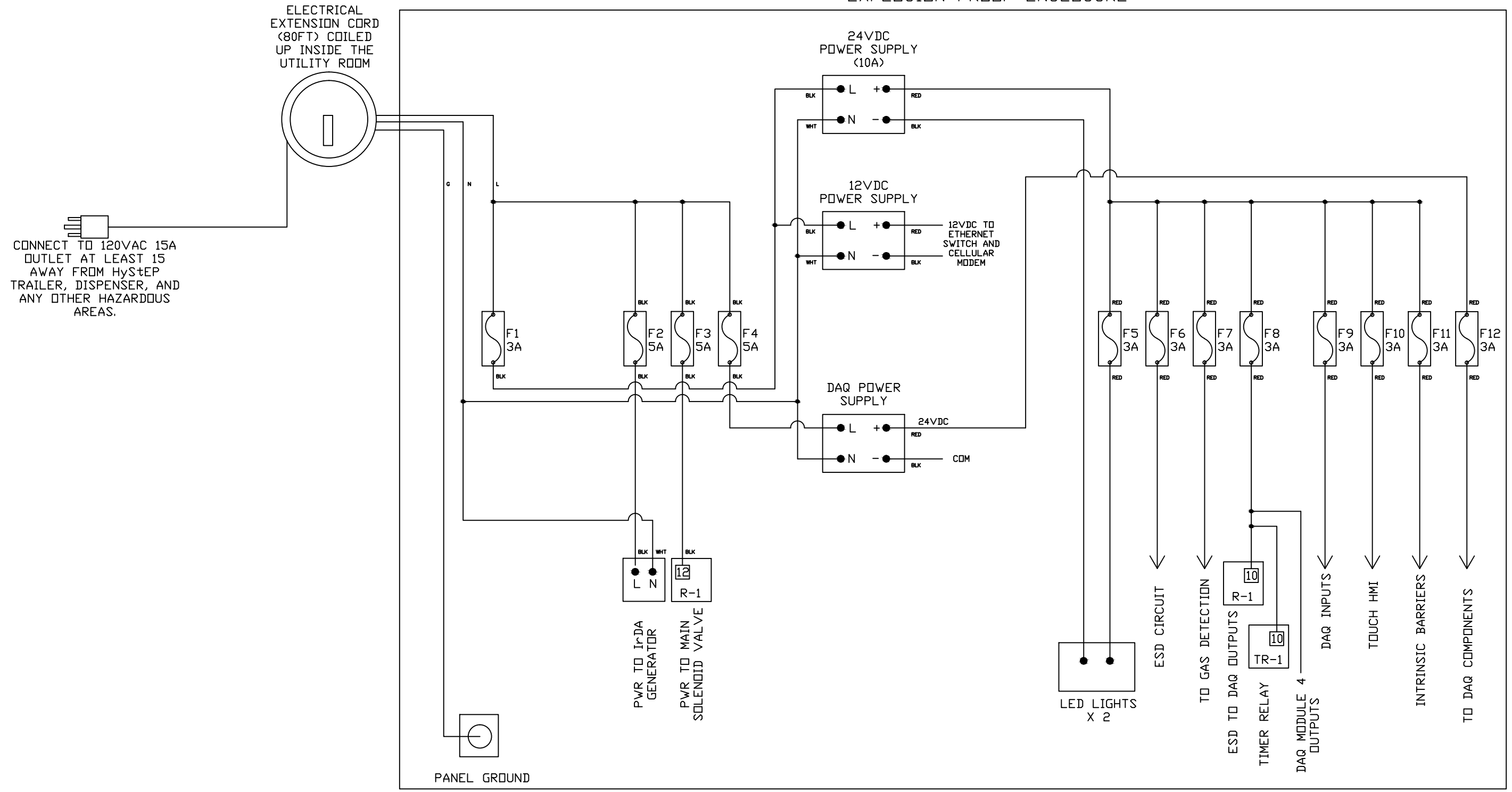
PROJECT NUMBER: PL-00742	
DRAWING NUMBER: PL-00742-11-02	
SHEET: 1 OF 1	PROJECT TITLE: HYDROGEN STATION TESTING DEVICE
	DRAWING TITLE: TRAILER ELECTRICAL EQUIPMENT LAYOUT



NO.	REMARKS	DATE	DRAWN	CHECKED	APPROVED	NO.	REMARKS	DATE	AUTHOR	REF#	VERSION
0	ISSUED FOR INTERNAL REVIEW	12FEB2015	BW	GM	GM						
1	ISSUED FOR SECOND REVIEW	15MAR2015	BW	GM	GM						
2	ISSUED FOR MATERIAL PROCUREMENT	01MAY2015	BW	GM	GM						
3	ISSUED FOR CONSTRUCTION AFTER TRAILER INSPECTION	08MAY2015	BW	GM	GM						
4	AS-BUILT ISSUED FOR REVIEW & APPROVAL	31AUG2015	BW	GM	GM						

PROJECT NUMBER: PL-00742	
DRAWING NUMBER: PL-00742-11-03	
SHEET: 1 OF 1	PROJECT TITLE: HYDROGEN STATION TESTING DEVICE
	DRAWING TITLE: SYSTEM SCHEMATIC

EXPLOSION-PROOF ENCLOSURE



CONNECT TO 120VAC 15A  
OUTLET AT LEAST 15  
AWAY FROM HyStEP  
TRAILER, DISPENSER, AND  
ANY OTHER HAZARDOUS  
AREAS.

ELECTRICAL  
EXTENSION CORD  
(80FT) COILED  
UP INSIDE THE  
UTILITY ROOM

24VDC  
POWER SUPPLY  
(10A)

12VDC  
POWER SUPPLY

DAQ POWER  
SUPPLY

PANEL GROUND

PWR TO I<sub>o</sub>DA  
GENERATOR

PWR TO MAIN  
SOLENOID VALVE

LED LIGHTS  
X 2

ESD CIRCUIT

TO GAS DETECTION

ESD TO DAQ OUTPUTS

TIMER RELAY

DAQ MDDULE 4  
OUTPUTS

DAQ INPUTS

TOUCH HMI

INTRINSIC BARRIERS


TO DAQ COMPONENTS

0	ISSUED FOR INTERNAL REVIEW	12FEB2015	BW	GM	GM													
1	ISSUED FOR SECOND REVIEW	15MAR2015	BW	GM	GM													
2	ISSUED FOR MATERIAL PROCUREMENT	01MAY2015	BW	GM	GM													
3	ISSUED FOR CONSTRUCTION AFTER TRAILER INSPECTION	08MAY2015	BW	GM	GM													
4	SIERRA WIRELESS AIRLINK GATEWAY ADDED	14MAY2015	BW	GM	GM													
5	AS-BUILT ISSUED FOR REVIEW & APPROVAL	31AUG2015	BW	GM	GM													
NO.	REMARKS	DATE	DRAWN	CHECKED	APPROVED	NO.	REMARKS	DATE	AUTHOR	REF#	VERSION							
REVISIONS						REFERENCE DRAWINGS/DOCUMENTS												

PROJECT NUMBER:  
PL-00742

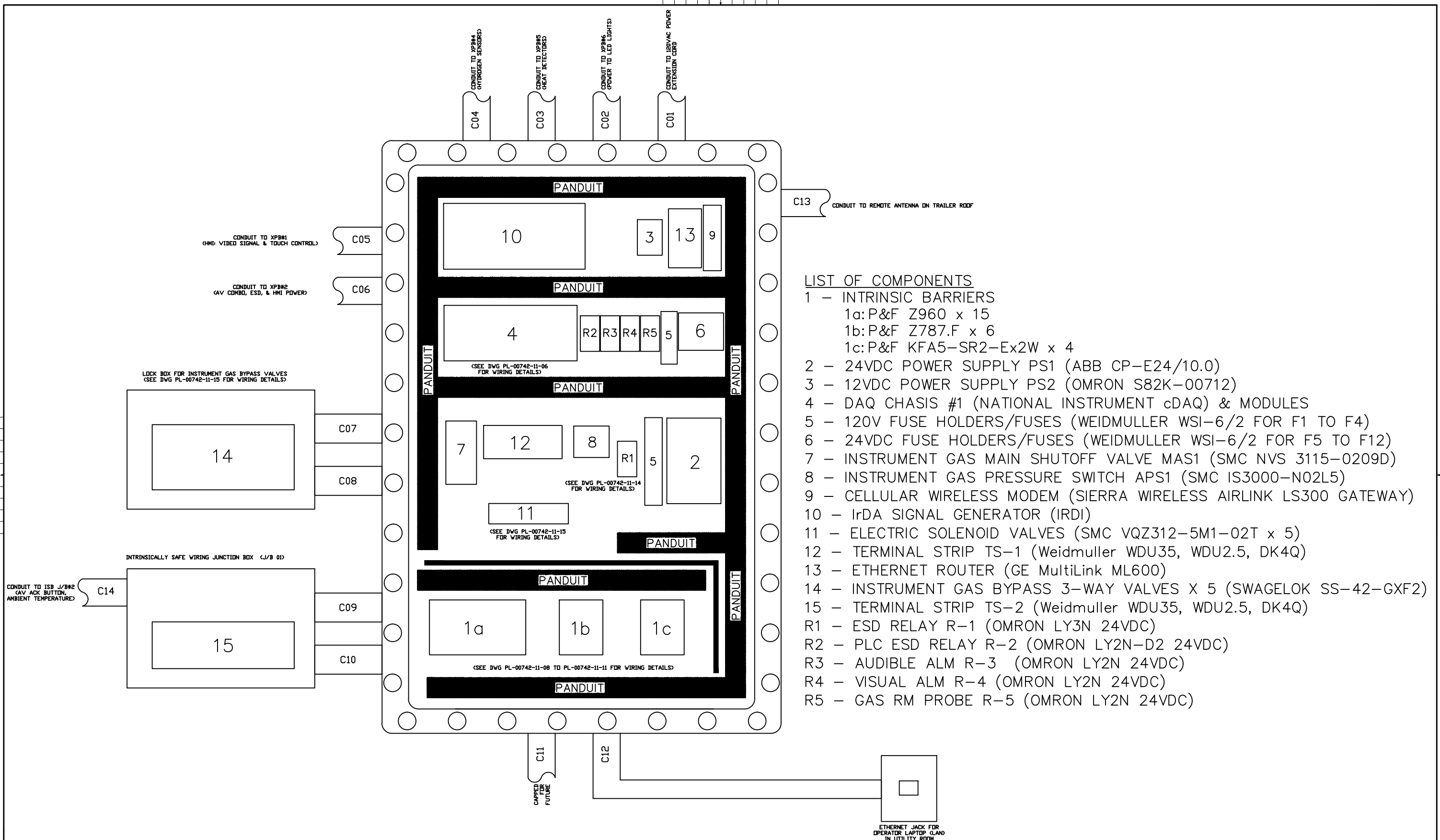
DRAWING NUMBER:  
PL-00742-11-04

SHEET:  
1 OF 1

**Powertech** 

PROJECT TITLE:  
HYDROGEN STATION TESTING DEVICE


DRAWING TITLE:  
ELECTRICAL POWER DISTRIBUTION



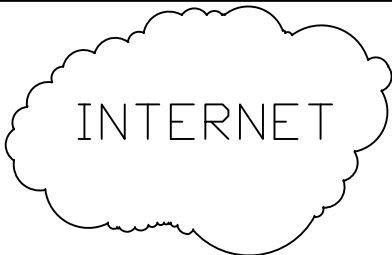
**LIST OF COMPONENTS**

- 1 – INTRINSIC BARRIERS
  - 1a: P&F Z960 x 15
  - 1b: P&F Z787.F x 6
  - 1c: P&F KFA5-SR2-Ex2W x 4
- 2 – 24VDC POWER SUPPLY PS1 (ABB CP-E24/10.0)
- 3 – 12VDC POWER SUPPLY PS2 (OMRON S82K-00712)
- 4 – DAQ CHASSIS #1 (NATIONAL INSTRUMENT cDAQ) & MODULES
- 5 – 120V FUSE HOLDERS/FUSES (WEIDMULLER WSI-6/2 FOR F1 TO F4)
- 6 – 24VDC FUSE HOLDERS/FUSES (WEIDMULLER WSI-6/2 FOR F5 TO F12)
- 7 – INSTRUMENT GAS MAIN SHUTOFF VALVE MAS1 (SMC NVS 3115-0209D)
- 8 – INSTRUMENT GAS PRESSURE SWITCH APS1 (SMC IS3000-N02L5)
- 9 – CELLULAR WIRELESS MODEM (SIERRA WIRELESS AIRLINK LS300 GATEWAY)
- 10 – IrDA SIGNAL GENERATOR (IRDI)
- 11 – ELECTRIC SOLENOID VALVES (SMC VQZ312-5M1-02T x 5)
- 12 – TERMINAL STRIP TS-1 (Weidmuller WDU35, WDU2.5, DK4Q)
- 13 – ETHERNET ROUTER (GE MultiLink ML600)
- 14 – INSTRUMENT GAS BYPASS 3-WAY VALVES X 5 (SWAGELOK SS-42-GXF2)
- 15 – TERMINAL STRIP TS-2 (Weidmuller WDU35, WDU2.5, DK4Q)
- R1 – ESD RELAY R-1 (OMRON LY3N 24VDC)
- R2 – PLC ESD RELAY R-2 (OMRON LY2N-D2 24VDC)
- R3 – AUDIBLE ALM R-3 (OMRON LY2N 24VDC)
- R4 – VISUAL ALM R-4 (OMRON LY2N 24VDC)
- R5 – GAS RM PROBE R-5 (OMRON LY2N 24VDC)

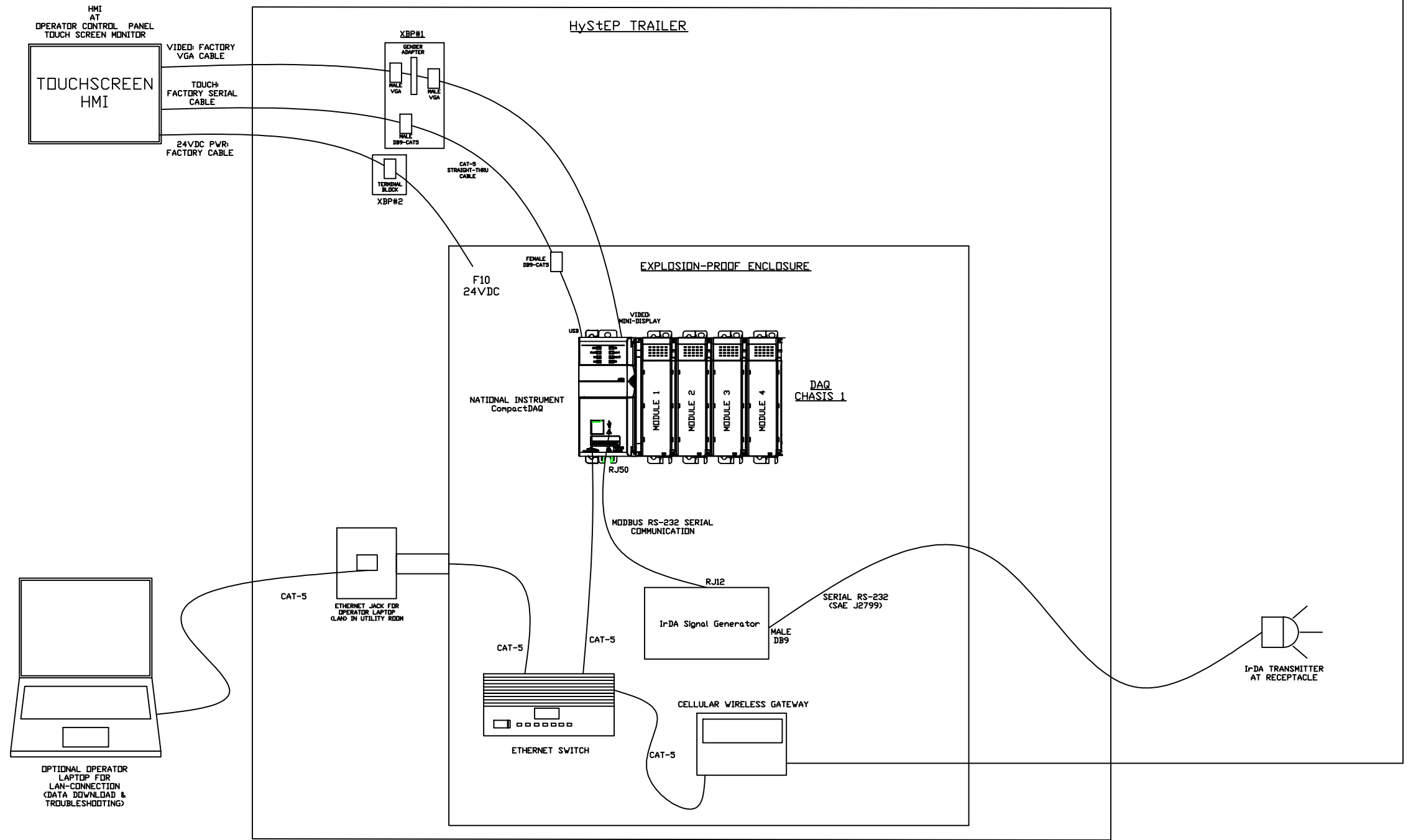
NO.	REMARKS	DATE	DRAWN	CHECKED	APPROVED	NO.	REMARKS	DATE	AUTHOR	REF#	VERSION
0	ISSUED FOR INTERNAL REVIEW	12FEB2015	BW	GM	GM						
1	ISSUED FOR SECOND REVIEW	15MAR2015	BW	GM	GM						
2	ISSUED FOR MATERIAL PROCUREMENT	01MAY2015	BW	GM	GM						
3	ISSUED FOR CONSTRUCTION AFTER TRAILER INSPECTION	08MAY2015	BW	GM	GM						
4	SIERRA WIRELESS AIRLINK GATEWAY ADDED	14MAY2015	BW	GM	GM						
5	AS-BUILT ISSUED FOR REVIEW & APPROVAL	31AUG2015	BW	GM	GM						

PROJECT NUMBER: PL-00742	
DRAWING NUMBER: PL-00742-11-05	
SHEET: 1 OF 1	DRAWING TITLE: HYDROGEN STATION TESTING DEVICE EXPLOSION-PROOF ENCLOSURE LAYOUT

Part ID	Description	Manufacturer	Part Number
DAQ 20103	DAQ Chassis - CPU	National Instrument	NI 9132
DAQ 20104	DAQ Chassis - Power Supply - 120VAC-24VDC, 5A	National Instrument	NI PS-15
IOM 20105	DAQ Module 1 - 32 Channel, Sinking Digital Input/Sourcing Digital Output Module	National Instrument	NI 9375
IOM 20106	DAQ Module 2 - 16 Channel Analog Current Input Module	National Instrument	NI 9208
IOM 20107	DAQ Module 3 - 16 Channel Thermocouple/Mv Input Module	National Instrument	NI 9213
IOM 20108	DAQ Module 4 - 8 Channel, Sourcing Digital Output Module	National Instrument	NI 9472




REMOTE ANTENNA ON TRAILER ROOF CONNECTS TO INTERNET VIA 3G CELLULAR NETWORK



NO.	REMARKS	DATE	DRAWN	CHECKED	APPROVED	NO.	REMARKS	DATE	AUTHOR	REF#	VERSION
0	ISSUED FOR INTERNAL REVIEW	12FEB2015	BW	GM	GM						
1	ISSUED FOR SECOND REVIEW	15MAR2015	BW	GM	GM						
2	ISSUED FOR MATERIAL PROCUREMENT	01MAY2015	BW	GM	GM						
3	ISSUED FOR CONSTRUCTION AFTER TRAILER INSPECTION	08MAY2015	BW	GM	GM						
4	SIERRA WIRELESS AIRLINK GATEWAY ADDED	14MAY2015	BW	GM	GM						
5	AS-BUILT ISSUED FOR REVIEW & APPROVAL	31AUG2015	BW	GM	GM						

PROJECT NUMBER: PL-00742	
DRAWING NUMBER: PL-00742-11-06	
SHEET: 1 OF 1	PROJECT TITLE: HYDROGEN STATION TESTING DEVICE
	DRAWING TITLE: DAQ SYSTEM & NETWORK LAYOUT

Point ID	Point Description	Point Type	I/O Signal / Measurement Range	Point Label	Manufacturer	END DEVICE		Certification	Part ID	I.S. Barrier
						Part Number	Part Description			
YDI 10100	Emergency Shutdown Circuit Monitoring	24VDC Sinking Digital Input	N.C. dry contact / open during normal operation	ESD_MON	Omron	LY3N	24VDC Relay DPDT, 10A 240VAC	CSA, CE, RU	R1	n/a
YDI 10101	Instrument Gas Pressure Switch	24VDC Sinking Digital Input	N.C. dry contact / open during normal operation	AIR_MON	SMC	IS3000-N02L5	DC24V4A, 0.1-0.7 MPa	CE	AS1	n/a
YDI 10102	Gas Room - Hydrogen Detector Failed	24VDC Sinking Digital Input	N.O. dry contact / Close during normal operation	GAS_H2	RKI Instruments INC	65-2641RK/H2	Hydrogen %LEL, 4-20mA, 2 Programmable Alarm Relays & Fail Relay, Explosion-Proof, Direct Digital Readout.	UL	HS1	n/a
YDI 10103	Utility Room - Hydrogen Detector Failed	24VDC Sinking Digital Input	N.O. dry contact / Close during normal operation	UTI_H2	RKI Instruments INC	65-2641RK/H2	Hydrogen %LEL, 4-20mA, 2 Programmable Alarm Relays & Fail Relay, Explosion-Proof, Direct Digital Readout.	UL	HS2	n/a
YDI 10104	Hydrogen Receptacle - Pneumatic-Actuated Valve End Switch	24VDC Sinking Digital Input	N.O. dry contact / Contact close when valve close	RECEP_AV5	Philmore (LKG INDUSTRIES)	30-2040	Mini Snap Action Switch with Long Lever, SPDT, 0.5A -125VDC	RU	AV5	P&F KFA5-SR2-EX2W
YDI 10105	Hydrogen Tank #1 - Pneumatic-Actuated Valve End Switch	24VDC Sinking Digital Input	N.O. dry contact / Contact close when valve close	TNK1_AV5	Philmore (LKG INDUSTRIES)	30-2040	Mini Snap Action Switch with Long Lever, SPDT, 0.5A -125VDC	RU	AV1	P&F KFA5-SR2-EX2W
YDI 10106	Hydrogen Tank #2 - Pneumatic-Actuated Valve End Switch	24VDC Sinking Digital Input	N.O. dry contact / Contact close when valve close	TNK2_AV5	Philmore (LKG INDUSTRIES)	30-2040	Mini Snap Action Switch with Long Lever, SPDT, 0.5A -125VDC	RU	AV2	P&F KFA5-SR2-EX2W
YDI 10107	Hydrogen Tank #3 - Pneumatic-Actuated Valve End Switch	24VDC Sinking Digital Input	N.O. dry contact / Contact close when valve close	TNK3_AV5	Philmore (LKG INDUSTRIES)	30-2040	Mini Snap Action Switch with Long Lever, SPDT, 0.5A -125VDC	RU	AV3	P&F KFA5-SR2-EX2W
YDI 10108	Vent Line - Pneumatic-Actuated Valve End Switch	24VDC Sinking Digital Input	N.O. dry contact / Contact close when valve close	VENT_AV5	Philmore (LKG INDUSTRIES)	30-2040	Mini Snap Action Switch with Long Lever, SPDT, 0.5A -125VDC	RU	AV4	P&F KFA5-SR2-EX2W
YDI 10109	Trailer Gas Room Door Monitor	24VDC Sinking Digital Input	N.O. dry contact / Contact close when door close	DOOR_MON	Omron	D4A-1101N	Mechanical Position Switch with Level, DPDT	UL	DS	P&F KFA5-SR2-EX2W
YDI 10110	Trailer Audible/Visual Alarm Momentary Push Button (Silence)	24VDC Sinking Digital Input	N.O. dry contact / Contact close when pressed	AV_ACK	ABB	CP1-10G-10	Momentary push button (N.O.), SPST, IEC60947-5-1	UL	AA	P&F KFD2-SR2-EX2W
YDI 10111	spare	24VDC Sinking Digital Input	n/a	n/a	n/a	n/a	n/a	n/a	n/a	n/a
YDI 10112	spare	24VDC Sinking Digital Input	n/a	n/a	n/a	n/a	n/a	n/a	n/a	n/a
YDI 10113	spare	24VDC Sinking Digital Input	n/a	n/a	n/a	n/a	n/a	n/a	n/a	n/a
YDI 10114	spare	24VDC Sinking Digital Input	n/a	n/a	n/a	n/a	n/a	n/a	n/a	n/a
YDI 10115	spare	24VDC Sinking Digital Input	n/a	n/a	n/a	n/a	n/a	n/a	n/a	n/a
YDO 10100	spare	24VDC Sourcing Digital Output	n/a	n/a	n/a	n/a	n/a	n/a	n/a	n/a
YDO 10101	Hydrogen Receptacle - Electric Solenoid Valve to Pneumatic-Actuated Valve	24VDC Sourcing Digital Output	24VDC to energize electric solenoid valve	RECEP_AV	SMC	VQZ312-5M1-02T	24VDC solenoid Open/Close Valve	n/a	SV1	n/a
YDO 10102	Hydrogen Tank #1 - Electric Solenoid Valve to Pneumatic-Actuated Valve	24VDC Sourcing Digital Output	24VDC to energize electric solenoid valve	TNK1_AV	SMC	VQZ312-5M1-02T	24VDC solenoid Open/Close Valve	n/a	SV2	n/a
YDO 10103	Hydrogen Tank #2 - Electric Solenoid Valve to Pneumatic-Actuated Valve	24VDC Sourcing Digital Output	24VDC to energize electric solenoid valve	TNK2_AV	SMC	VQZ312-5M1-02T	24VDC solenoid Open/Close Valve	n/a	SV3	n/a
YDO 10104	Hydrogen Tank #3 - Electric Solenoid Valve to Pneumatic-Actuated Valve	24VDC Sourcing Digital Output	24VDC to energize electric solenoid valve	TNK3_AV	SMC	VQZ312-5M1-02T	24VDC solenoid Open/Close Valve	n/a	SV4	n/a
YDO 10105	Gas Vent Line - Electric Solenoid Valve to Pneumatic-Actuated Valve	24VDC Sourcing Digital Output	24VDC to energize electric solenoid valve	VENT_AV	SMC	VQZ312-5M1-02T	24VDC solenoid Open/Close Valve	n/a	SV5	n/a
YDO 10106	spare	24VDC Sourcing Digital Output	n/a	n/a	n/a	n/a	n/a	n/a	n/a	n/a
YDO 10107	spare	24VDC Sourcing Digital Output	n/a	n/a	n/a	n/a	n/a	n/a	n/a	n/a
YDO 10108	spare	24VDC Sourcing Digital Output	n/a	n/a	n/a	n/a	n/a	n/a	n/a	n/a
YDO 10109	spare	24VDC Sourcing Digital Output	n/a	n/a	n/a	n/a	n/a	n/a	n/a	n/a
YDO 10110	spare	24VDC Sourcing Digital Output	n/a	n/a	n/a	n/a	n/a	n/a	n/a	n/a
YDO 10111	spare	24VDC Sourcing Digital Output	n/a	n/a	n/a	n/a	n/a	n/a	n/a	n/a
YDO 10112	spare	24VDC Sourcing Digital Output	n/a	n/a	n/a	n/a	n/a	n/a	n/a	n/a
YDO 10113	spare	24VDC Sourcing Digital Output	n/a	n/a	n/a	n/a	n/a	n/a	n/a	n/a
YDO 10114	spare	24VDC Sourcing Digital Output	n/a	n/a	n/a	n/a	n/a	n/a	n/a	n/a
YDO 10115	spare	24VDC Sourcing Digital Output	n/a	n/a	n/a	n/a	n/a	n/a	n/a	n/a

0	ISSUED FOR INTERNAL REVIEW	12FEB2015	BW	GM	GM																PROJECT NUMBER: PL-00742	 PROJECT TITLE: HYDROGEN STATION TESTING DEVICE	
1	ISSUED FOR SECOND REVIEW	15MAR2015	BW	GM	GM																DRAWING NUMBER: PL-00742-11-07		
2	ISSUED FOR MATERIAL PROCUREMENT	01MAY2015	BW	GM	GM																SHEET: 1 OF 2		DRAWING TITLE: INPUT/OUTPUT POINTS LIST
3	ISSUED FOR CONSTRUCTION AFTER TRAILER INSPECTION	08MAY2015	BW	GM	GM																		
4	AS-BUILT ISSUED FOR REVIEW & APPROVAL	31AUG2015	BW	GM	GM																		
NO.	REMARKS	DATE	DRAWN	CHECKED	APPROVED	NO.																	
REVISIONS											REFERENCE DRAWINGS/DOCUMENTS												


Point ID	Point Description	Point Type	I/O Signal / Measurement Range	Point Label	Manufacturer	END DEVICE			Certification	Part ID	I.S. Barrier
						Part Number	Part Description				
YAI 10200	Receptacle Inlet Pressure	4-20mA Analog Input	4-20mA signal / 0 - 15,000 psi	P_recep	Stellar Technologies	GT2250-10000G-215	24VDC, 4-20mA, protected by Intrinsically Safe Circuit	UL	PT4	P&F 2787.F	
YAI 10201	Hydrogen Tank #1 - Line Pressure	4-20mA Analog Input	4-20mA signal / 0 - 15,000 psi	P_tank1	Stellar Technologies	GT2250-10000G-215	24VDC, 4-20mA, protected by Intrinsically Safe Circuit	UL	PT1	P&F 2787.F	
YAI 10202	Hydrogen Tank #2 - Line Pressure	4-20mA Analog Input	4-20mA signal / 0 - 15,000 psi	P_tank2	Stellar Technologies	GT2250-10000G-215	24VDC, 4-20mA, protected by Intrinsically Safe Circuit	UL	PT2	P&F 2787.F	
YAI 10203	Hydrogen Tank #3 - Line Pressure	4-20mA Analog Input	4-20mA signal / 0 - 15,000 psi	P_tank3	Stellar Technologies	GT2250-10000G-215	24VDC, 4-20mA, protected by Intrinsically Safe Circuit	UL	PT3	P&F 2787.F	
YAI 10204	Gas Room - Hydrogen Level [%LEL]	4-20mA Analog Input	4-20mA signal / 0 - 100 % LEL	H2_conc1	RKI Instruments INC	65-2641RK/H2	Hydrogen %LEL, 4-20mA, 2 Programmable Alarm Relays & Fail Relay, Explosion-Proof, Direct Digital Readout.	UL	HS1	Explosion-Proof Enc	
YAI 10205	Utility Room - Hydrogen Level [%LEL]	4-20mA Analog Input	4-20mA signal / 0 - 100 % LEL	H2_conc2	RKI Instruments INC	65-2641RK/H2	Hydrogen %LEL, 4-20mA, 2 Programmable Alarm Relays & Fail Relay, Explosion-Proof, Direct Digital Readout.	UL	HS2	Explosion-Proof Enc	
YAI 10206	Spare 4-20mA Input: Terminated at ISB J/B 01 & prewired with IS Barrier.	4-20mA Analog Input	n/a	n/a	n/a	n/a	n/a	n/a	n/a	P&F 2787.F	
YAI 10207	Spare 4-20mA Input: Terminated at ISB J/B 01 & prewired with IS Barrier.	4-20mA Analog Input	n/a	n/a	n/a	n/a	n/a	n/a	n/a	P&F 2787.F	
YAI 10208	spare	4-20mA Analog Input	n/a	n/a	n/a	n/a	n/a	n/a	n/a	n/a	
YAI 10209	spare	4-20mA Analog Input	n/a	n/a	n/a	n/a	n/a	n/a	n/a	n/a	
YAI 10210	spare	4-20mA Analog Input	n/a	n/a	n/a	n/a	n/a	n/a	n/a	n/a	
YAI 10211	spare	4-20mA Analog Input	n/a	n/a	n/a	n/a	n/a	n/a	n/a	n/a	
YAI 10212	spare	4-20mA Analog Input	n/a	n/a	n/a	n/a	n/a	n/a	n/a	n/a	
YAI 10213	spare	4-20mA Analog Input	n/a	n/a	n/a	n/a	n/a	n/a	n/a	n/a	
YAI 10214	spare	4-20mA Analog Input	n/a	n/a	n/a	n/a	n/a	n/a	n/a	n/a	
YAI 10215	spare	4-20mA Analog Input	n/a	n/a	n/a	n/a	n/a	n/a	n/a	n/a	
YTI 10300	Hydrogen Tank #1 - Tank Internal Temperature A	Type T Thermocouple	-328 to 662°F	T_tank1a	Sandelius	MPV0331U	Type T, 1/8"OD, Copper, 316 Sheath, 18" long with sensing element at tip and 12" back from tip. Protected by Intrinsically Safe Circuit	UL	TT1a	P&F 2960	
YTI 10301	Hydrogen Tank #1 - Tank Internal Temperature B	Type T Thermocouple	-328 to 662°F	T_tank1b	Sandelius	MPV0331U	Type T, 1/8"OD, Copper, 316 Sheath, 18" long with sensing element at tip and 12" back from tip. Protected by Intrinsically Safe Circuit	UL	TT1b	P&F 2960	
YTI 10302	Hydrogen Tank #1 - Inlet Gas Temperature	Type T Thermocouple	-328 to 662°F	T_inlet1	Sandelius	MPV0331U	Type T, 1/8"OD, Copper, 316 Sheath, 18" long with sensing element at tip and 12" back from tip. Protected by Intrinsically Safe Circuit	UL	TT4	P&F 2960	
YTI 10303	Hydrogen Tank #2 - Tank Internal Temperature A	Type T Thermocouple	-328 to 662°F	T_tank2a	Sandelius	MPV0331U	Type T, 1/8"OD, Copper, 316 Sheath, 18" long with sensing element at tip and 12" back from tip. Protected by Intrinsically Safe Circuit	UL	TT2a	P&F 2960	
YTI 10304	Hydrogen Tank #2 - Tank Internal Temperature B	Type T Thermocouple	-328 to 662°F	T_tank2b	Sandelius	MPV0331U	Type T, 1/8"OD, Copper, 316 Sheath, 18" long with sensing element at tip and 12" back from tip. Protected by Intrinsically Safe Circuit	UL	TT2b	P&F 2960	
YTI 10305	Hydrogen Tank #2 - Inlet Gas Temperature	Type T Thermocouple	-328 to 662°F	T_inlet2	Sandelius	MPV0331U	Type T, 1/8"OD, Copper, 316 Sheath, 18" long with sensing element at tip and 12" back from tip. Protected by Intrinsically Safe Circuit	UL	TT5	P&F 2960	
YTI 10306	Hydrogen Tank #3 - Tank Internal Temperature A	Type T Thermocouple	-328 to 662°F	T_tank3a	Sandelius	MPV0331U	Type T, 1/8"OD, Copper, 316 Sheath, 18" long with sensing element at tip and 12" back from tip. Protected by Intrinsically Safe Circuit	UL	TT3a	P&F 2960	
YTI 10307	Hydrogen Tank #3 - Tank Internal Temperature B	Type T Thermocouple	-328 to 662°F	T_tank3b	Sandelius	MPV0331U	Type T, 1/8"OD, Copper, 316 Sheath, 18" long with sensing element at tip and 12" back from tip. Protected by Intrinsically Safe Circuit	UL	TT3b	P&F 2960	
YTI 10308	Hydrogen Tank #3 - Inlet Gas Temperature	Type T Thermocouple	-328 to 662°F	T_inlet3	Sandelius	MPV0331U	Type T, 1/8"OD, Copper, 316 Sheath, 18" long with sensing element at tip and 12" back from tip. Protected by Intrinsically Safe Circuit	UL	TT6	P&F 2960	
YTI 10309	Receptacle Inlet Gas Temperature	Type T Thermocouple	-328 to 662°F	T_recep	Sandelius	2T-125T316-G-31/2-T1-120	Type T, 1/8"OD, Copper, 316 Sheath, Grounded Junction Single Element, 120" teflon cable w/SS overraid. Protected by Intrinsically Safe Circuit	UL	TT7	P&F 2960	
YTI 10310	Ambient Temperature	Type T Thermocouple	-328 to 662°F	T_amb	Sandelius	2T-125T316-G-31/2-T1-121	Type T, 1/8"OD, Copper, 316 Sheath, Grounded Junction Single Element, 120" teflon cable w/SS overraid. Protected by Intrinsically Safe Circuit	UL	TT8	P&F 2960	
YTI 10311	Spare Thermocouple Input: Terminated at ISB J/B 01 & prewired with IS Barrier.	Type T Thermocouple	n/a	n/a	n/a	n/a	n/a	n/a	n/a	P&F 2960	
YTI 10312	Spare Thermocouple Input: Terminated at ISB J/B 01 & prewired with IS Barrier.	Type T Thermocouple	n/a	n/a	n/a	n/a	n/a	n/a	n/a	P&F 2960	
YTI 10313	Spare Thermocouple Input: Terminated at ISB J/B 01 & prewired with IS Barrier.	Type T Thermocouple	n/a	n/a	n/a	n/a	n/a	n/a	n/a	P&F 2960	
YTI 10314	Spare Thermocouple Input: Terminated at ISB J/B 01 & prewired with IS Barrier.	Type T Thermocouple	n/a	n/a	n/a	n/a	n/a	n/a	n/a	P&F 2960	
YTI 10315	Spare Thermocouple Input: Terminated at ISB J/B 01 & prewired with IS Barrier.	Type T Thermocouple	n/a	n/a	n/a	n/a	n/a	n/a	n/a	n/a	
YDO 10400	Emergency Shutdown Circuit - cDAQ Shutdown Command	24VDC Sourcing Digital Output	N.O. dry contact / close during normal operation	ESD_COM	Omron	LY2N-D2	24VDC Relay DPDT, 12A 240VAC	CSA, CE, RU	R2	n/a	
YDO 10401	Trailer Visual Alarm (Strobe)	24VDC Sourcing Digital Output	24VDC to alarm	VIS_ALM	e2s	IS-mC1	Array of 6 high intensity Red L.E.D's. Double flash at 2Hz and 1Hz. Combined 24V 30mA	Class 1 Div 2	n/a	n/a	
YDO 10402	Trailer Audible Alarm (Siren)	24VDC Sourcing Digital Output	24VDC to alarm	AUD_ALM	e2s	IS-mC1	Audible alarm 24VDC, Class 1 Div 2100dB(A) @ 1m +/- 3dB - Tone 2* [91dB(A) @ 10ft/3m], Combined 24V 30mA	Class 1 Div 2	n/a	n/a	
YDO 10403	spare	24VDC Sourcing Digital Output	n/a	n/a	n/a	n/a	n/a	n/a	n/a	n/a	
YDO 10404	spare	24VDC Sourcing Digital Output	n/a	n/a	n/a	n/a	n/a	n/a	n/a	n/a	
YDO 10405	spare	24VDC Sourcing Digital Output	n/a	n/a	n/a	n/a	n/a	n/a	n/a	n/a	
YDO 10406	spare	24VDC Sourcing Digital Output	n/a	n/a	n/a	n/a	n/a	n/a	n/a	n/a	
YDO 10407	spare	24VDC Sourcing Digital Output	n/a	n/a	n/a	n/a	n/a	n/a	n/a	n/a	

0	ISSUED FOR INTERNAL REVIEW	12FEB2015	BW	GM	GM
1	ISSUED FOR SECOND REVIEW	15MAR2015	BW	GM	GM
2	ISSUED FOR MATERIAL PROCUREMENT	01MAY2015	BW	GM	GM
3	ISSUED FOR CONSTRUCTION AFTER TRAILER INSPECTION	08MAY2015	BW	GM	GM
4	AS-BUILT ISSUED FOR REVIEW & APPROVAL	31AUG2015	BW	GM	GM

NO.	REMARKS	DATE	DRAWN	CHECKED	APPROVED	NO.	REMARKS	DATE	AUTHOR	REF#	VERSION
REVISIONS											

NO.	REMARKS	DATE	AUTHOR	REF#	VERSION
REFERENCE DRAWINGS/DOCUMENTS					

PROJECT NUMBER: PL-00742
DRAWING NUMBER: PL-00742-11-07
SHEET: 2 OF 2

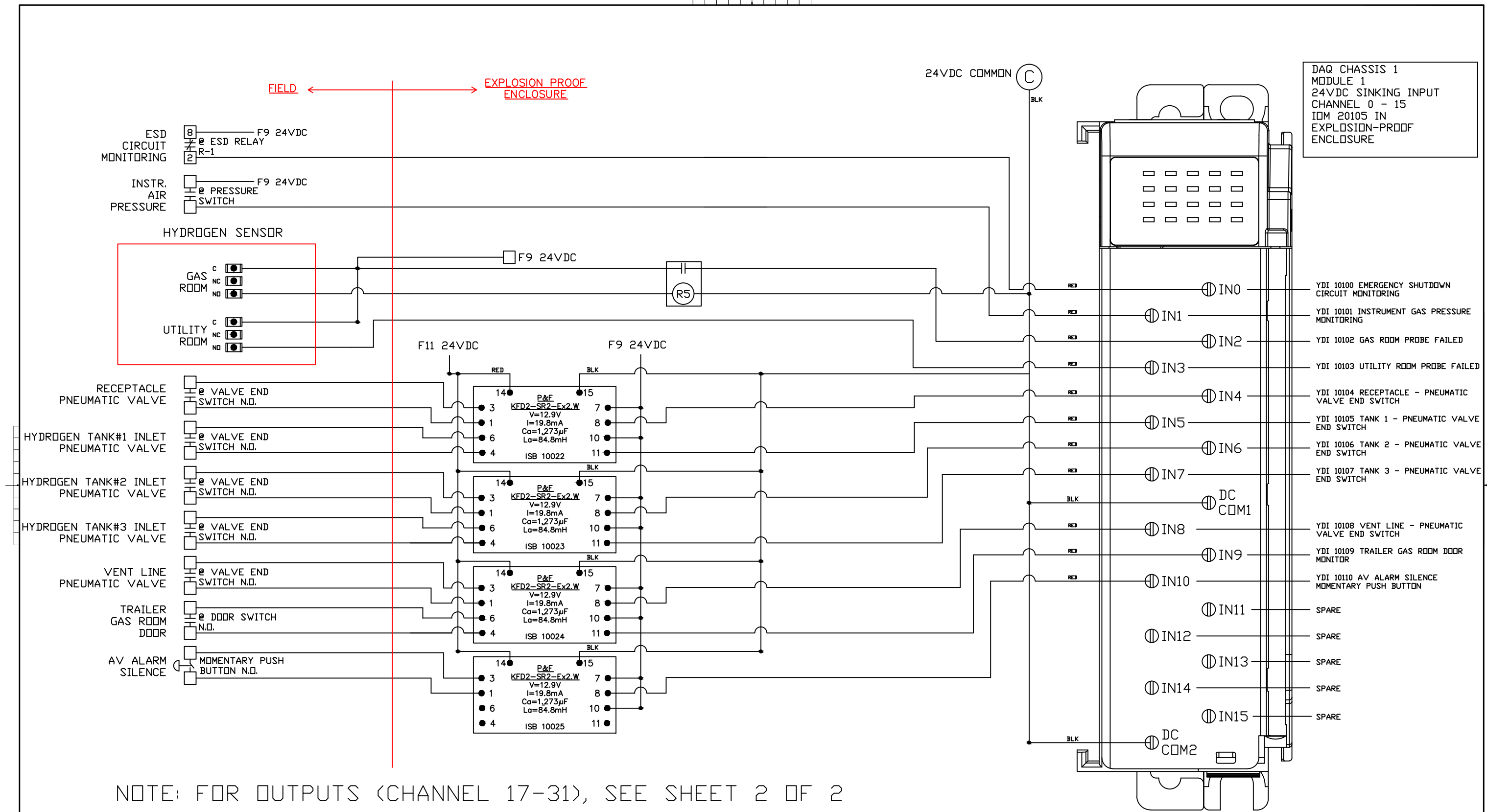


**Powertech**

PROJECT TITLE:  
HYDROGEN STATION TESTING DEVICE

DRAWING TITLE:  
INPUT/OUTPUT POINTS LIST



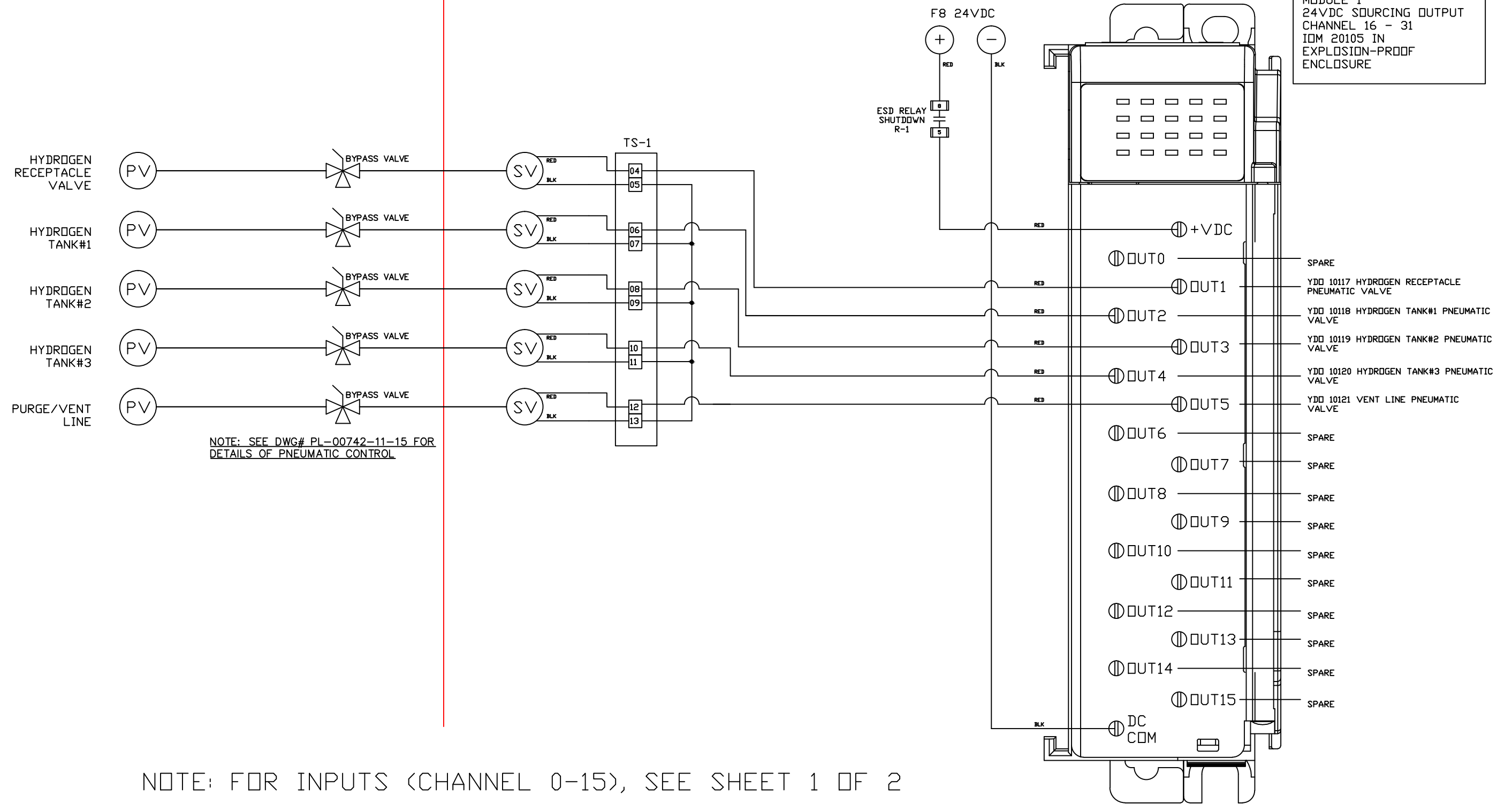


NOTE: FOR OUTPUTS (CHANNEL 17-31), SEE SHEET 2 OF 2

NO.	REMARKS	DATE	DRAWN	CHECKED	APPROVED	NO.	REMARKS	DATE	AUTHOR	REF#	VERSION
0	ISSUED FOR INTERNAL REVIEW	12FEB2015	BW	GM	GM						
1	ISSUED FOR SECOND REVIEW	15MAR2015	BW	GM	GM						
2	ISSUED FOR MATERIAL PROCUREMENT	01MAY2015	BW	GM	GM						
3	ISSUED FOR CONSTRUCTION AFTER TRAILER INSPECTION	08MAY2015	BW	GM	GM						
4	AS-BUILT ISSUED FOR REVIEW & APPROVAL	31AUG2015	BW	GM	GM						

PROJECT NUMBER: PL-00742	
DRAWING NUMBER: PL-00742-11-08	
SHEET: 1 OF 2	PROJECT TITLE: HYDROGEN STATION TESTING DEVICE
	DRAWING TITLE: MODULE 1 DIGITAL INPUT/OUTPUT WIRING DETAILS


FIELD ← EXPLOSION PROOF ENCLOSURE

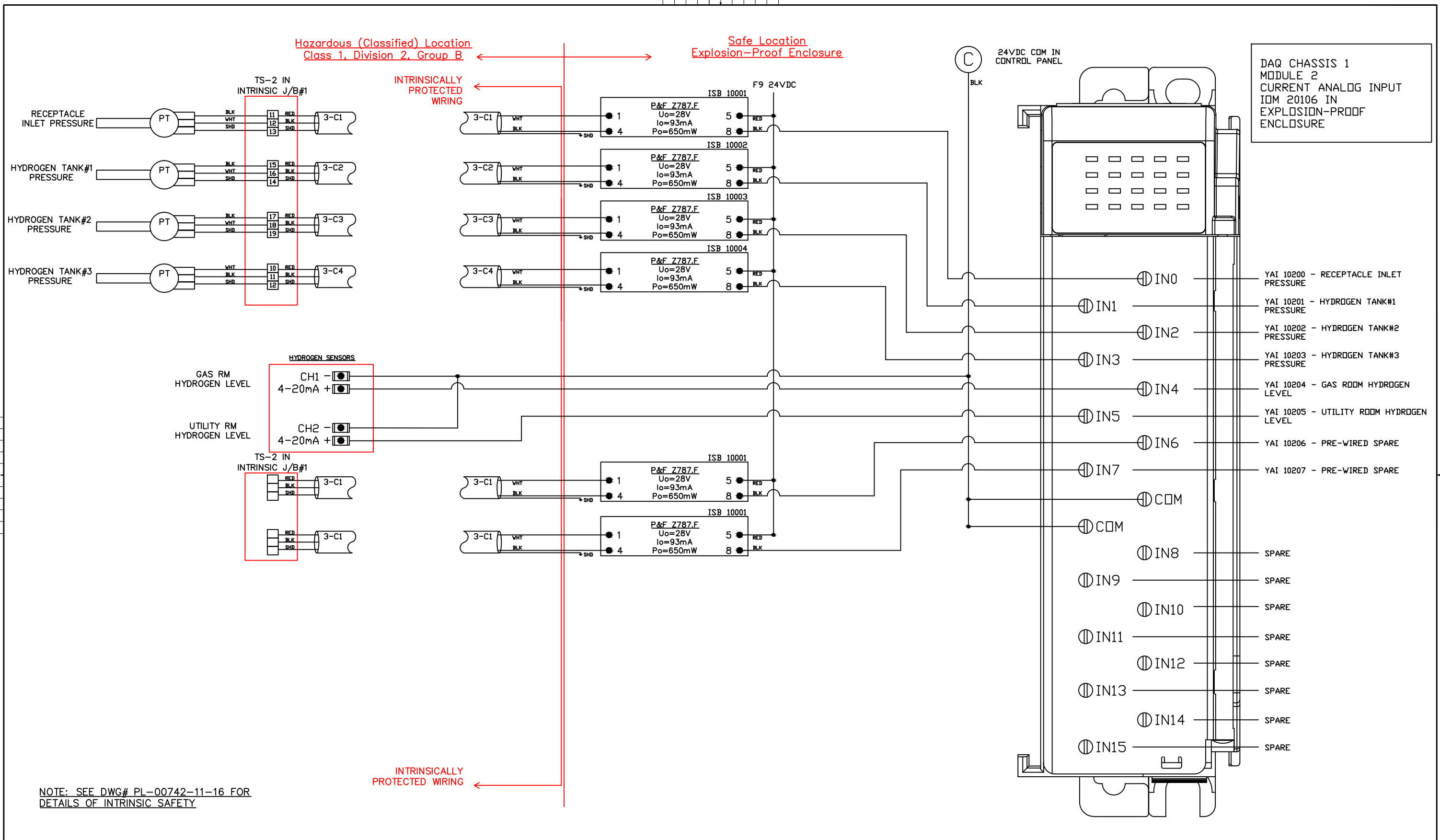


NOTE: SEE DWG# PL-00742-11-15 FOR DETAILS OF PNEUMATIC CONTROL

NOTE: FOR INPUTS (CHANNEL 0-15), SEE SHEET 1 OF 2

NO.	REMARKS	DATE	DRAWN	CHECKED	APPROVED	NO.	REMARKS	DATE	AUTHOR	REF#	VERSION
0	ISSUED FOR INTERNAL REVIEW	12FEB2015	BW	GM	GM						
1	ISSUED FOR SECOND REVIEW	15MAR2015	BW	GM	GM						
2	ISSUED FOR MATERIAL PROCUREMENT	01MAY2015	BW	GM	GM						
3	ISSUED FOR CONSTRUCTION AFTER TRAILER INSPECTION	08MAY2015	BW	GM	GM						
4	AS-BUILT ISSUED FOR REVIEW & APPROVAL	31AUG2015	BW	GM	GM						

PROJECT NUMBER: PL-00742	 <b>Powertech</b>
DRAWING NUMBER: PL-00742-11-08	
SHEET: 2 OF 2	PROJECT TITLE: HYDROGEN STATION TESTING DEVICE
	DRAWING TITLE: MODULE 1 DIGITAL INPUT/OUTPUT WIRING DETAILS



NO.	REMARKS	DATE	DRAWN	CHECKED	APPROVED	NO.	REMARKS	DATE	AUTHOR	REF#	VERSION
0	ISSUED FOR INTERNAL REVIEW	12FEB2015	BW	GM	GM						
1	ISSUED FOR SECOND REVIEW	15MAR2015	BW	GM	GM						
2	ISSUED FOR MATERIAL PROCUREMENT	01MAY2015	BW	GM	GM						
3	ISSUED FOR CONSTRUCTION AFTER TRAILER INSPECTION	08MAY2015	BW	GM	GM						
4	AS-BUILT ISSUED FOR REVIEW & APPROVAL	31AUG2015	BW	GM	GM						

PROJECT NUMBER: PL-00742	
DRAWING NUMBER: PL-00742-11-09	
SHEET: 1 OF 1	PROJECT TITLE: HYDROGEN STATION TESTING DEVICE
	DRAWING TITLE: MODULE 2 ANALOG INPUT WIRING DETAILS

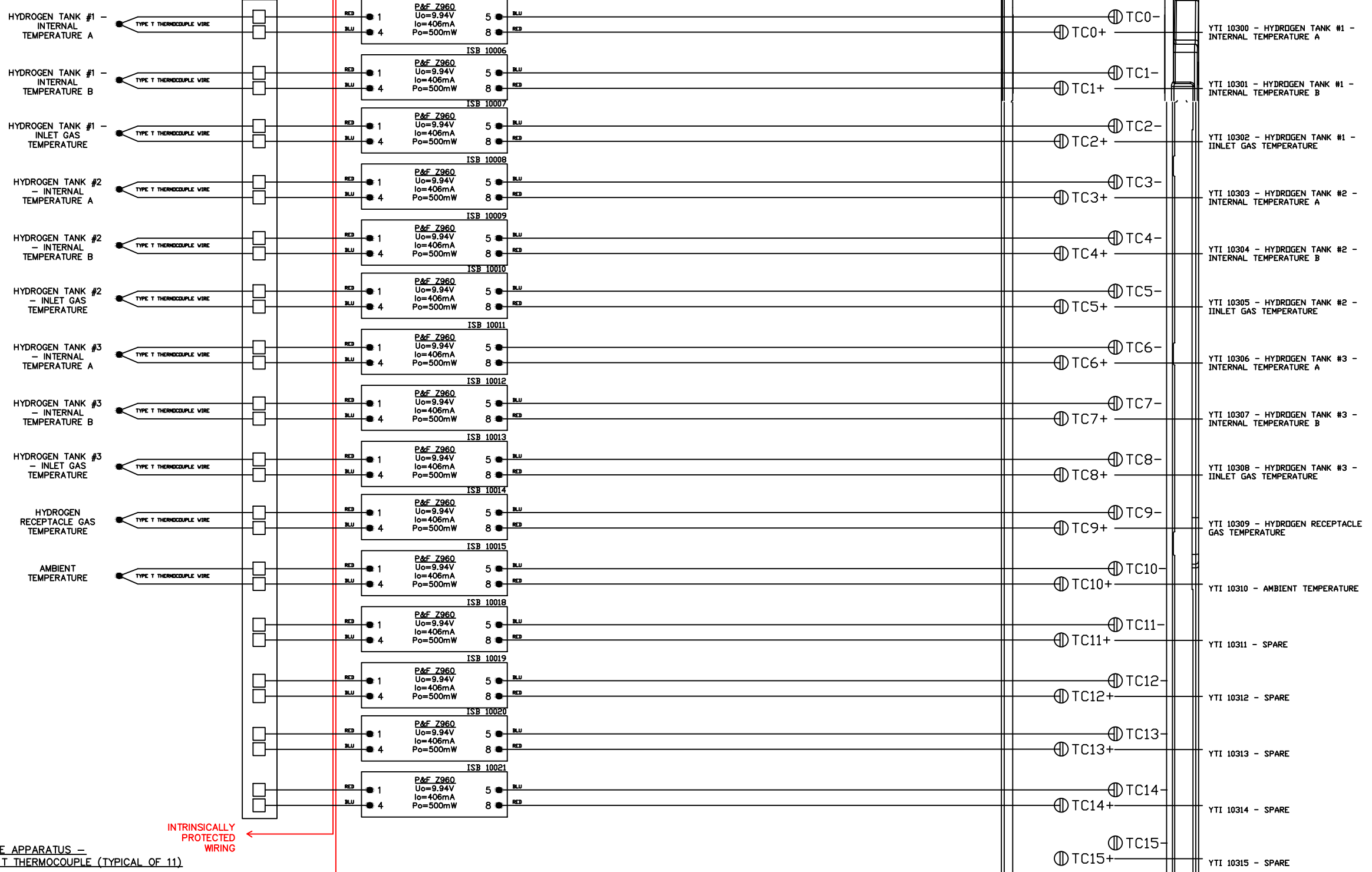
Hazardous (Classified) Location  
Class 1, Division 2, Group B

Safe Location  
Explosion-Proof Enclosure

INTRINSICALLY  
PROTECTED  
WIRING

INTRINSIC J/B #01  
TS-2

35MM DIN RAIL



DAQ CHASSIS 1  
MODULE 3  
THERMOCOUPLE INPUT  
IDM 20107 IN  
EXPLOSION-PROOF  
ENCLOSURE


SIMPLE APPARATUS -  
TYPE T THERMOCOUPLE (TYPICAL OF 11)

NOTE: SEE DWG# PL-00742-11-16 FOR  
DETAILS OF INTRINSIC SAFETY

INTRINSICALLY  
PROTECTED  
WIRING

NO.	REMARKS	DATE	DRAWN	CHECKED	APPROVED	NO.	REMARKS	DATE	AUTHOR	REF#	VERSION
0	ISSUED FOR INTERNAL REVIEW	12FEB2015	BW	GM	GM						
1	ISSUED FOR SECOND REVIEW	15MAR2015	BW	GM	GM						
2	ISSUED FOR MATERIAL PROCUREMENT	01MAY2015	BW	GM	GM						
3	ISSUED FOR CONSTRUCTION AFTER TRAILER INSPECTION	08MAY2015	BW	GM	GM						
4	AS-BUILT ISSUED FOR REVIEW & APPROVAL	31AUG2015	BW	GM	GM						

PROJECT NUMBER: PL-00742
DRAWING NUMBER: PL-00742-11-10
SHEET: 1 OF 1

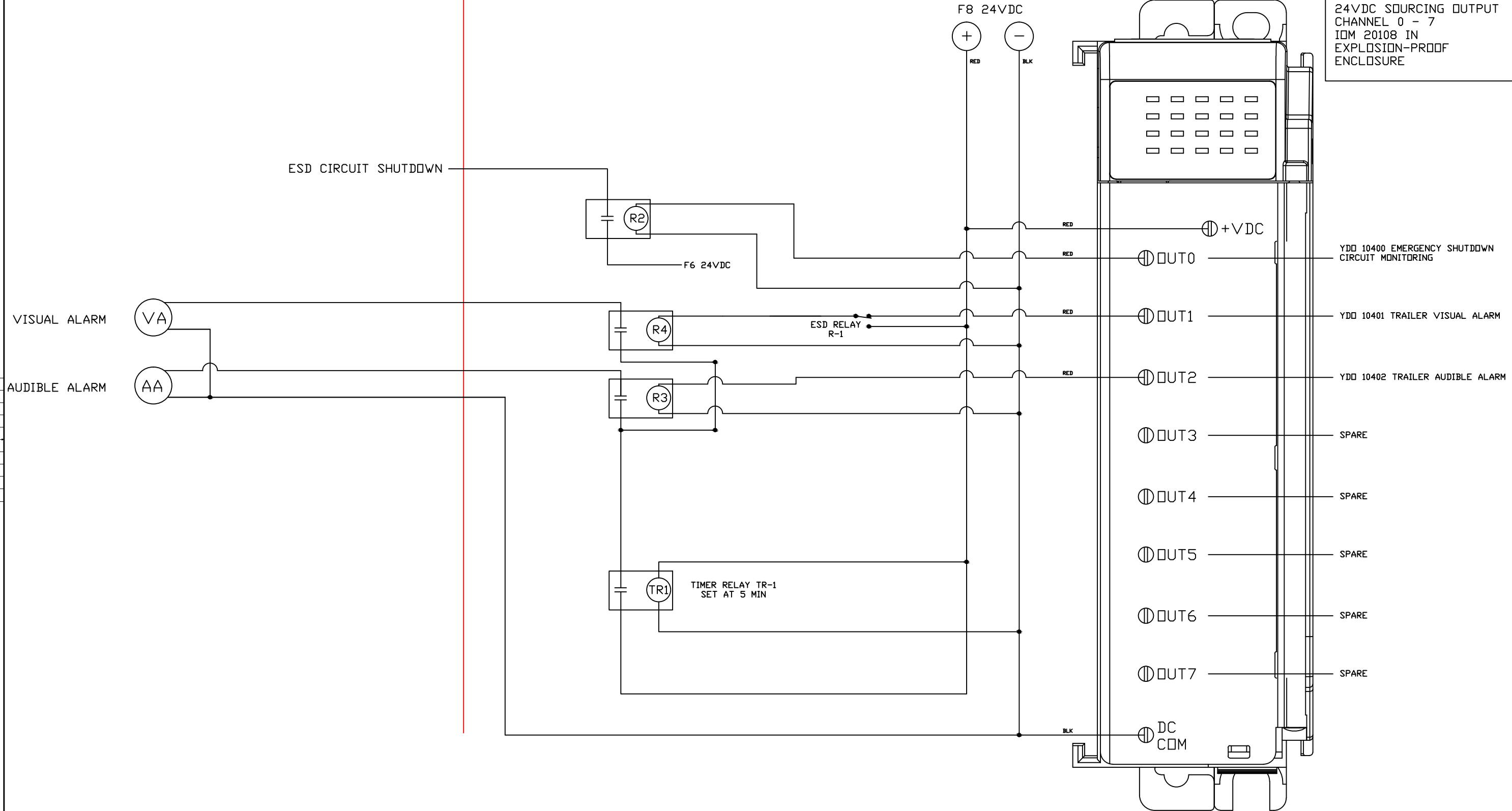
**Powertech** 

PROJECT TITLE:  
HYDROGEN STATION TESTING DEVICE


DRAWING TITLE:  
MODULE 4 THERMOCOUPLE WIRING DETAILS

FIELD ← EXPLOSION PROOF ENCLOSURE

DAQ CHASSIS 1  
MODULE 4  
24VDC SOURCING OUTPUT  
CHANNEL 0 - 7  
IDM 20108 IN  
EXPLOSION-PROOF  
ENCLOSURE



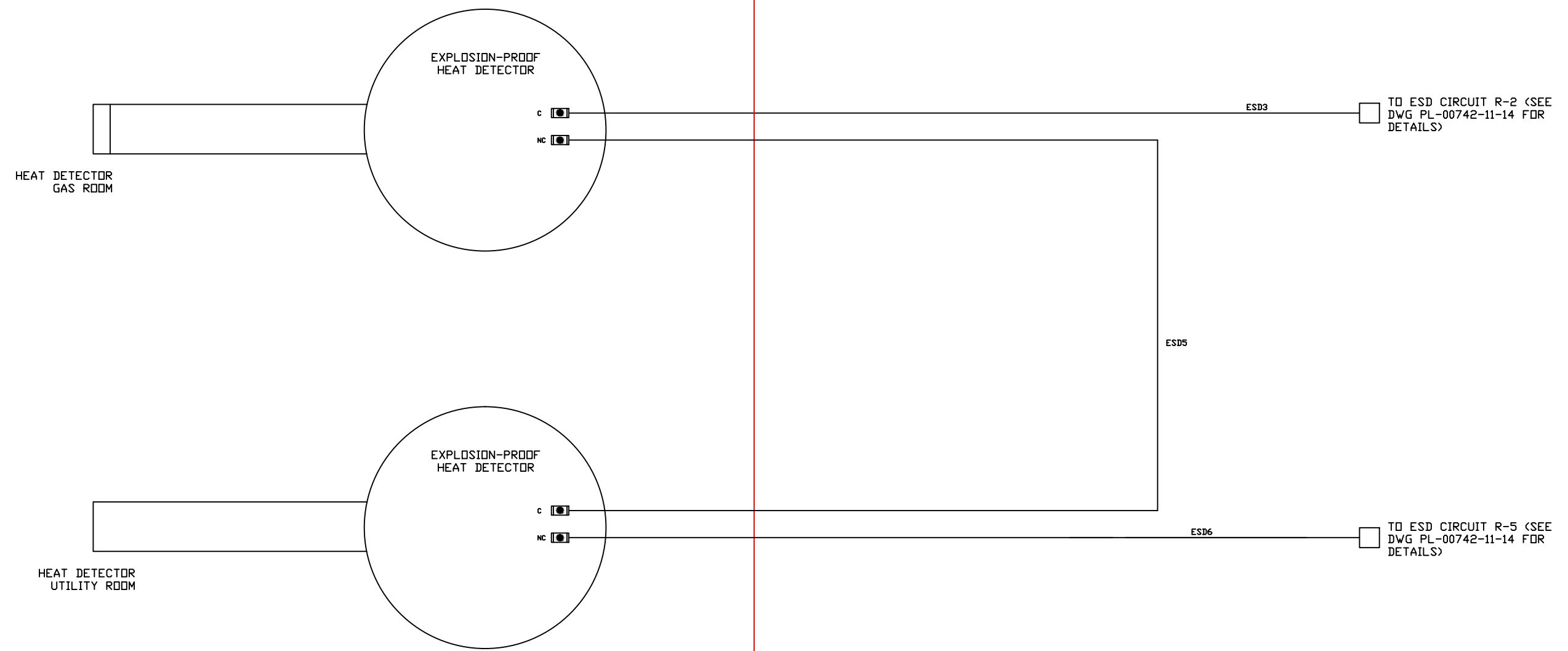
NO.	REMARKS	DATE	DRAWN	CHECKED	APPROVED	NO.	REMARKS	DATE	AUTHOR	REF#	VERSION
0	ISSUED FOR INTERNAL REVIEW	12FEB2015	BW	GM	GM						
1	ISSUED FOR SECOND REVIEW	15MAR2015	BW	GM	GM						
2	ISSUED FOR MATERIAL PROCUREMENT	01MAY2015	BW	GM	GM						
3	ISSUED FOR CONSTRUCTION AFTER TRAILER INSPECTION	08MAY2015	BW	GM	GM						
4	AS-BUILT ISSUED FOR REVIEW & APPROVAL	31AUG2015	BW	GM	GM						

PROJECT NUMBER: PL-00742	
DRAWING NUMBER: PL-00742-11-11	
SHEET: 1 OF 1	PROJECT TITLE: HYDROGEN STATION TESTING DEVICE  DRAWING TITLE: MODULE 4 DIGITAL OUTPUT WIRING DETAILS

← FIELD EXPLOSION-PROOF ENCLOSURE →

NOTE:

1. SEE DWG# PL-00742-11-14 FOR WIRING DETAILS OF THE ESD CIRCUIT
2. HEAT DETECTOR SHALL BE RATED FOR HAZARDOUS AREA IN EXPLOSION-PROOF HOUSING.
3. RELAY CONTACTS ARE CLOSED DURING NON-ALARM CONDITIONS AND OPEN UPON ALARM CONDITIONS.




0	ISSUED FOR INTERNAL REVIEW	12FEB2015	BW	GM	GM														
1	ISSUED FOR SECOND REVIEW	15MAR2015	BW	GM	GM														
2	ISSUED FOR MATERIAL PROCUREMENT	01MAY2015	BW	GM	GM														
3	ISSUED FOR CONSTRUCTION AFTER TRAILER INSPECTION	08MAY2015	BW	GM	GM														
4	AS-BUILT ISSUED FOR REVIEW & APPROVAL	31AUG2015	BW	GM	GM														

PROJECT NUMBER:  
PL-00742

DRAWING NUMBER:  
PL-00742-11-12

SHEET:  
1 OF 1

**Powertech** 

PROJECT TITLE:  
HYDROGEN STATION TESTING DEVICE

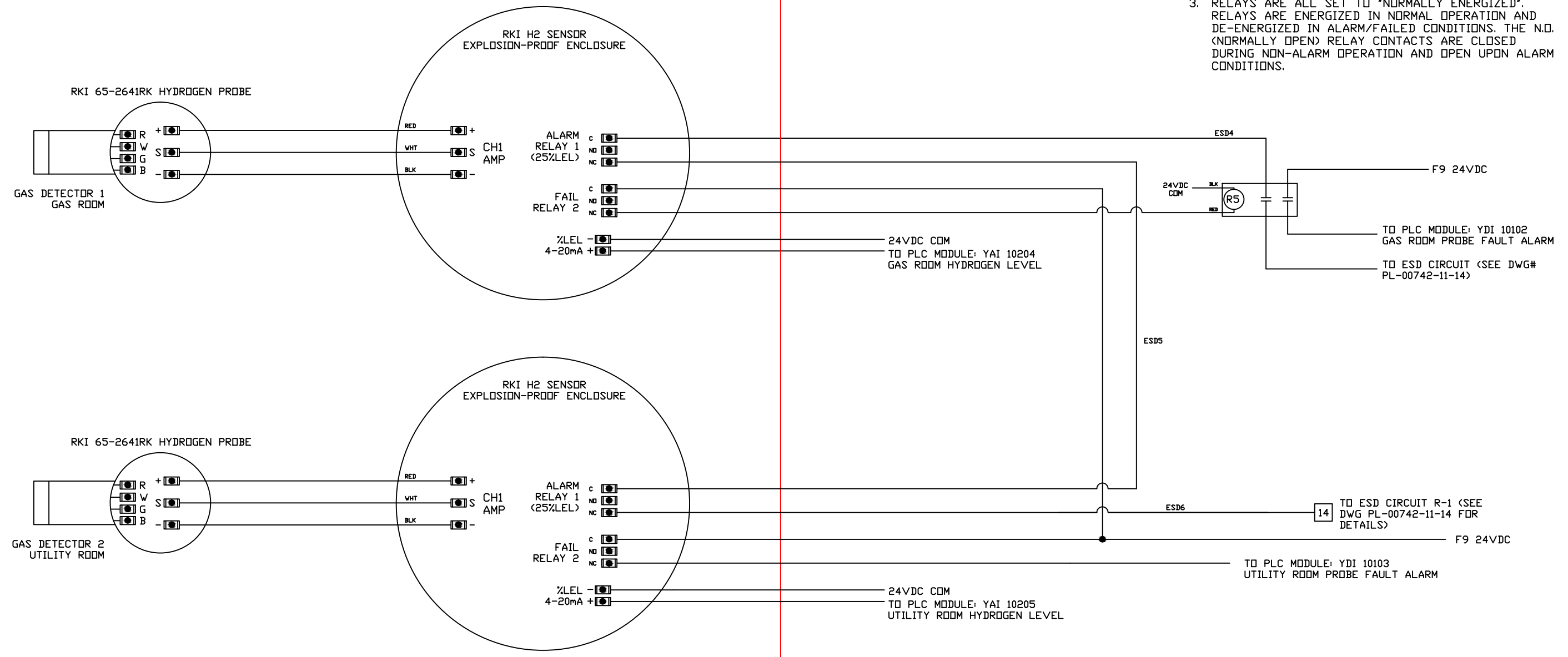
DRAWING TITLE:  
FIRE DETECTION CIRCUIT WIRING DETAILS

NO.	REMARKS	DATE	DRAWN	CHECKED	APPROVED	NO.	REMARKS	DATE	AUTHOR	REF#	VERSION
REVISIONS						REFERENCE DRAWINGS/DOCUMENTS					


FIELD ← EXPLOSION-PROOF ENCLOSURE →

NOTE:

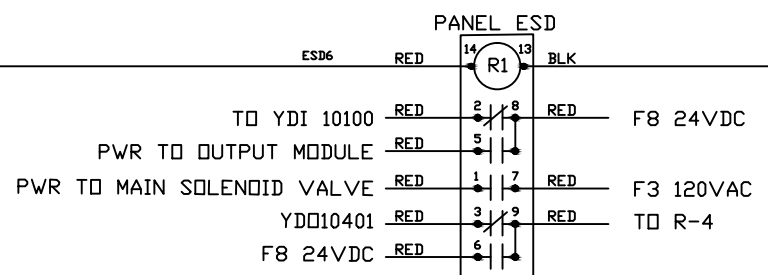
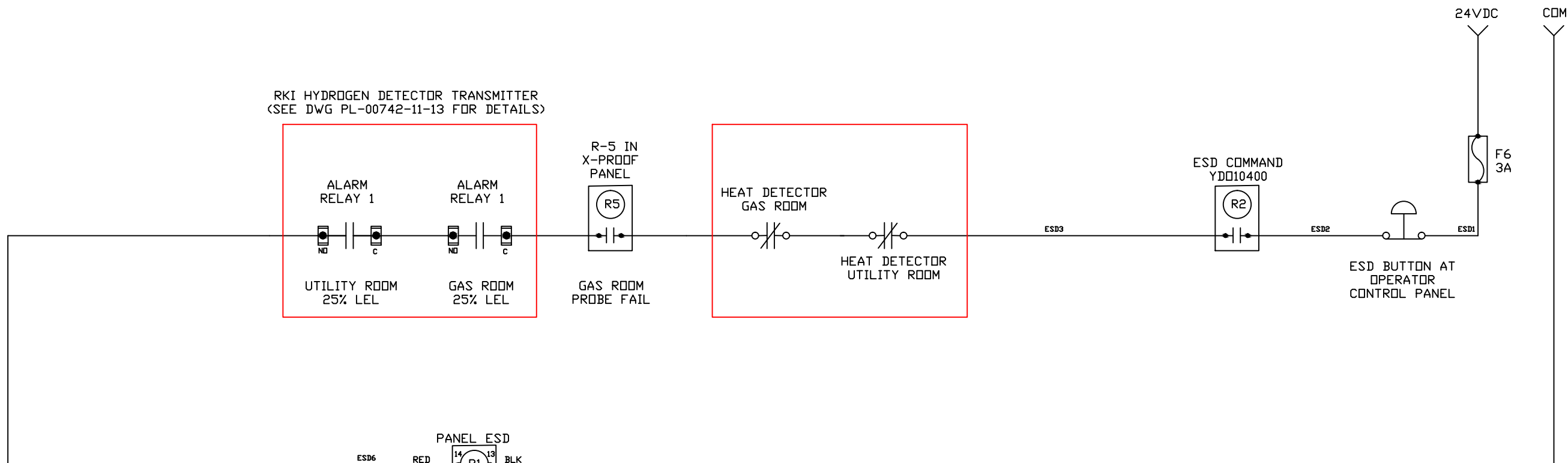
1. SEE DWG# PL-00742-11-14 FOR WIRING DETAILS OF THE ESD CIRCUIT
2. GAS TRANSMITTERS/PROBES SHALL BE RATED FOR HAZARDOUS AREA IN EXPLOSION-PROOF HOUSING.
3. RELAYS ARE ALL SET TO "NORMALLY ENERGIZED". RELAYS ARE ENERGIZED IN NORMAL OPERATION AND DE-ENERGIZED IN ALARM/FAILED CONDITIONS. THE N.O. (NORMALLY OPEN) RELAY CONTACTS ARE CLOSED DURING NON-ALARM OPERATION AND OPEN UPON ALARM CONDITIONS.



0	ISSUED FOR INTERNAL REVIEW	12FEB2015	BW	GM	GM														
1	ISSUED FOR SECOND REVIEW	15MAR2015	BW	GM	GM														
2	ISSUED FOR MATERIAL PROCUREMENT	01MAY2015	BW	GM	GM														
3	ISSUED FOR CONSTRUCTION AFTER TRAILER INSPECTION	08MAY2015	BW	GM	GM														
4	AS-BUILT ISSUED FOR REVIEW & APPROVAL	31AUG2015	BW	GM	GM														

PROJECT NUMBER: PL-00742	
DRAWING NUMBER: PL-00742-11-13	
SHEET: 1 OF 1	PROJECT TITLE: HYDROGEN STATION TESTING DEVICE
	DRAWING TITLE: GAS DETECTION PANEL WIRING DETAILS

NO.	REMARKS	DATE	DRAWN	CHECKED	APPROVED	NO.	REMARKS	DATE	AUTHOR	REF#	VERSION
REVISIONS						REFERENCE DRAWINGS/DOCUMENTS					



NOTE: ALL CONTACTS SHOWN ARE AT ITS NORMAL STATE UPON POWER LOSS

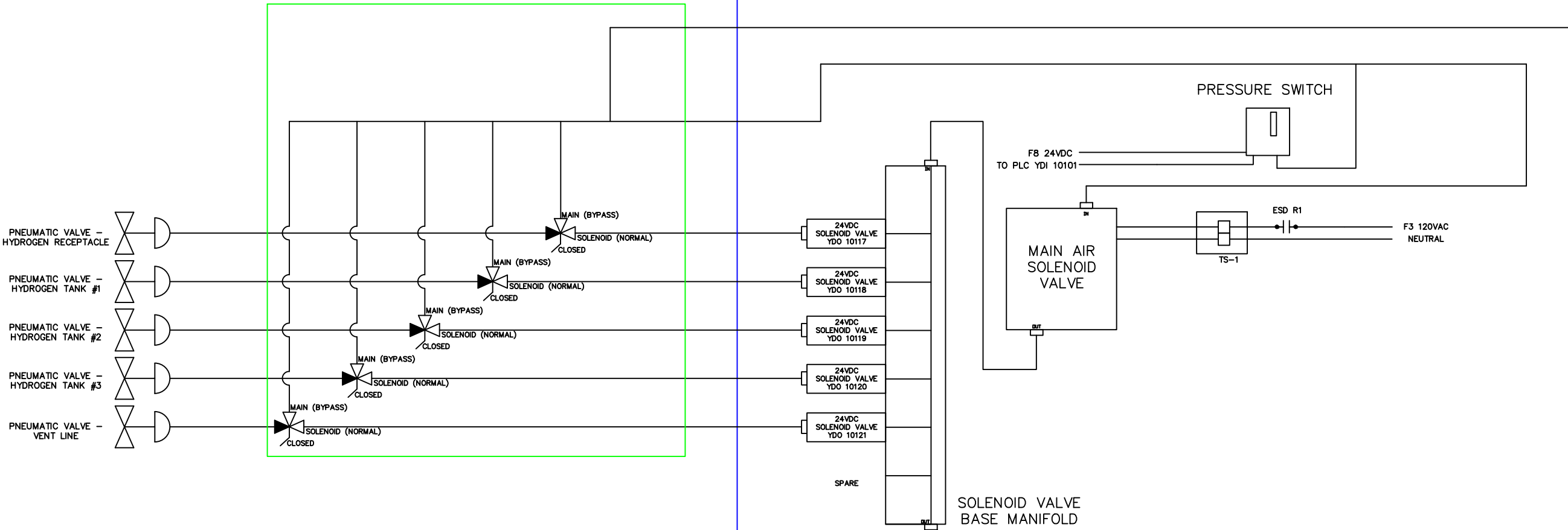
NO.	REMARKS	DATE	DRAWN	CHECKED	APPROVED	NO.	REMARKS	DATE	AUTHOR	REF#	VERSION
0	ISSUED FOR INTERNAL REVIEW	12FEB2015	BW	GM	GM						
1	ISSUED FOR SECOND REVIEW	15MAR2015	BW	GM	GM						
2	ISSUED FOR MATERIAL PROCUREMENT	01MAY2015	BW	GM	GM						
3	ISSUED FOR CONSTRUCTION AFTER TRAILER INSPECTION	08MAY2015	BW	GM	GM						
4	AS-BUILT ISSUED FOR REVIEW & APPROVAL	31AUG2015	BW	GM	GM						
REVISIONS			REFERENCE DRAWINGS/DOCUMENTS								

PROJECT NUMBER: PL-00742	
DRAWING NUMBER: PL-00742-11-14	
SHEET: 1 OF 1	PROJECT TITLE: HYDROGEN STATION TESTING DEVICE  DRAWING TITLE: EMERGENCY SHUTDOWN (ESD) CONTROL CIRCUIT WIRING DETAILS

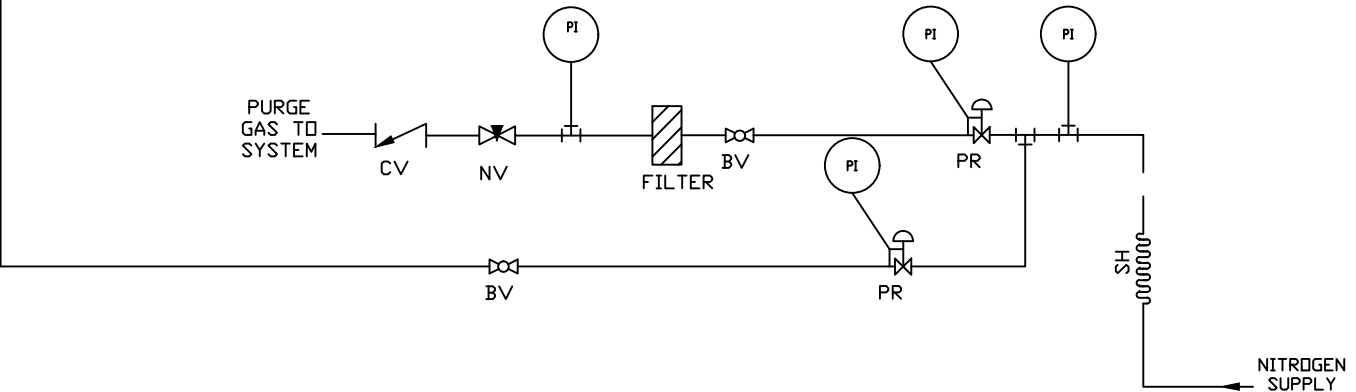


EXPLOSION-PROOF ENCLOSURE


LOCK BOX  
INSTRUMENT GAS BYPASS VALVES



NOTE: ALL PNEUMATIC LINES ARE SAE J844 TYPE 3A 1/4" OD UNLESS OTHERWISE NOTED




NO.	REMARKS	DATE	DRAWN	CHECKED	APPROVED	NO.	REMARKS	DATE	AUTHOR	REF#	VERSION
0	ISSUED FOR INTERNAL REVIEW	12FEB2015	BW	GM	GM						
1	ISSUED FOR SECOND REVIEW	15MAR2015	BW	GM	GM						
2	ISSUED FOR MATERIAL PROCUREMENT	01MAY2015	BW	GM	GM						
3	ISSUED FOR CONSTRUCTION AFTER TRAILER INSPECTION	08MAY2015	BW	GM	GM						
4	AS-BUILT ISSUED FOR REVIEW & APPROVAL	31AUG2015	BW	GM	GM						

PROJECT NUMBER: PL-00742	 <b>Powertech</b>
DRAWING NUMBER: PL-00742-11-15	
SHEET: 1 OF 1	PROJECT TITLE: HYDROGEN STATION TESTING DEVICE
	DRAWING TITLE: PNEUMATIC CONTROL SYSTEM SCHEMATIC



Location	Device Tag	Description	Manufacturer	Part Number	Details	Certification
Gas Room	JB	I.S. JB 1 Junction Box	Hoffman	A10106PHC	Type 4, 4x,12, 13	cUL <sub>US</sub>
Gas Room	JB	Valve Override Junction Box	Hoffman	A10106PHC	Type 4, 4x,12, 13	cUL <sub>US</sub>
Gas Room	JB	I.S. JB 2 Junction Box	Hoffman	A664PHC	Type 4, 4x,12, 13	cUL <sub>US</sub>
Gas Room	TS	Terminal Blocks	Weidmuller	WDU 2.5.WPE 2.5	Non-Incendive Device installed in IS Junction Box	UL
Gas Room	LT	Area Lighting	Nemalux	GSLEDIP48-CW-WF-BLK-C1D2	24VDC, 1.4A. Class I, Division 2, Group A,B,C,D T5	UL
Gas Room	HGD	Hydrogen Gas Detector	RKI Instruments INC	65-2641RK/H2	Hydrogen %LEL, 4-20mA, 2 Programmable Alarm Relays & Fail Relay, Explosion-Proof, Direct Digital Readout	UL
Gas Room	HD	Heat Detector	Kidde-Fenwal	27120-22	N.C. Open on Temperature Rise. Class I, Division 2, Group A,B,C,D T5	UL
Gas Room	PT	Pressure Transducer	Stellar Technologies	GT2250-15000G-215	15,000psig, 24VDC, 4-20mA, Hazardous Area Rated, 9/16-18 UNF connection.	UL
Gas Room	TT	Thermocouple - Single Element	Sandeliuss	2T-125T316-G-31/2-T1-120	Type T, 1/8"OD, Copper, 316 Shealth, Grounded Junction Single Element, 120" telfon cable w/SS overraid. Protected by Intrinsically Safe Circuit	UL
Gas Room	TD	Thermocouple - Dual Element	Sandeliuss	MPV0331U	Type T, 1/8"OD, Copper, 316 Shealth, Grounded Junction Dual Element, 18" long with sensing element at tip and 12" back from tip, 120" telfon cable w/SS overraid. Protected by Intrinsically Safe Circuit	UL
Gas Room	AVS	Air Solenoid Valve End Switch (Close Position) x 5	Philmore (LKG INDUSTRIES)	30-2040	Mini Snap Action Switch with Long Lever, SPDT, 0.5A -125VDC	RU
Gas Room	DS	Trailer Gas Room Door Monitor	Omron	D4A-1101N	Mechanical Position Switch with Lever, DPDT	UL
Gas Room	RA	Remote Antenna for Cellular Modem	Taoglas	G24.A.305111	GSM/GPRS/CDMA/HSPA, Heavy duty screw mount UV and vandal resistant PC housing and thread IP67 compliant, ROHS Compliant	UL
X-Proof Enc (Utility Rm)	ENC	Control Panel	Akron Electric	24368 AXJ Series	Explosion Proof Enclosure External:W30"xH42"xD11 1/8. Internal: W24"xH36"xD8"	cUL <sub>US</sub>
X-Proof Enc (Utility Rm)	DAQ	DAQ CPU	National Instrument	NI 9132	General Purpose	cUL <sub>US</sub>
X-Proof Enc (Utility Rm)	DAQ	DAQ Chassis - Power Supply - 120VAC-24VDC, 5A	National Instrument	NI PS-15	General Purpose	cUL <sub>US</sub>
X-Proof Enc (Utility Rm)	IOM	DAQ Module 1 - 32 channel 24 VDC Sinking Input/Sourcing Output Module	National Instrument	NI 9375	Class I, Division 2, Group A,B,C,D T4	cUL <sub>US</sub>
X-Proof Enc (Utility Rm)	IOM	DAQ Module 2 - 16 Channel Analog Current Input Module	National Instrument	NI 9208	Class I, Division 2, Group A,B,C,D T4	cUL <sub>US</sub>
X-Proof Enc (Utility Rm)	IOM	DAQ Module 3 - 16 Channel Thermocouple/Mv Input Module	National Instrument	NI 9213	Class I, Division 2, Group A,B,C,D T4	cUL <sub>US</sub>
X-Proof Enc (Utility Rm)	IOM	DAQ Module 4 - 8 channel 24 VDC Sourcing Output Module	National Instrument	NI 9472	Class I, Division 2, Group A,B,C,D T4	cUL <sub>US</sub>
X-Proof Enc (Utility Rm)	ISB	I.S. Barrier x 15	Pepperl + Fuchs	Z960	Thermocuple. Class I, Division 2, Group A,B,C,D	cUL <sub>US</sub>
X-Proof Enc (Utility Rm)	ISB	I.S. Barrier X 6	Pepperl + Fuchs	Z787.F	4-20mA Analogy. Class I, Division 2, Group A,B,C,D	cUL <sub>US</sub>
X-Proof Enc (Utility Rm)	ISB	I.S. Barrier X 4	Pepperl + Fuchs	KFAS-SR2-EX2W	Digital Input. Class I, Division 2, Group A,B,C,D	cUL <sub>US</sub>
X-Proof Enc (Utility Rm)	PSU	Power Supply	ABB	CP-E 24/10	115-230 VAC to 24VDC, 10A	UL
X-Proof Enc (Utility Rm)	PSU	Power Supply	Omron	S82K-00712	120VAC to 12VDC, 0.6A	cUL <sub>US</sub>
X-Proof Enc (Utility Rm)	FH	Fuse Holders (24VDC)	Weidmuller	WSI-6	General Purpose F1-F4	UL
X-Proof Enc (Utility Rm)	FH	Fuse Holders (24VDC)	Weidmuller	WSI-6/2	General Purpose F5-F12	UL
X-Proof Enc (Utility Rm)	FUS	Fuses	BUSS	AGC-3, AGC-5	General Purpose (250V-3A/5A, Fast Acting)	UL, CSA
X-Proof Enc (Utility Rm)	RY	Relay (R-2 to R-5)	Omron	LY2N	24VDC	CSA,CE, RU
X-Proof Enc (Utility Rm)	APS	Instrument Gas Pressure Switch	SMC	IS3000-N02L5	DC24V4A, 0.1-0.7 MPa	n/a
X-Proof Enc (Utility Rm)	MAS	Instrument Air Main Shut Off Solenoid Valve	SMC	VS 3115-0230T	110VAC	n/a
X-Proof Enc (Utility Rm)	SV	Solenoid Valve	SMC	VQZ312-5M1-02T	24VDC Solenoid Open/Close Valve	n/a
X-Proof Enc (Utility Rm)	TS	Terminal Blocks	Weidmuller	Weidmuller	General Purpose for 120VAC/24VDC	UL
X-Proof Enc (Utility Rm)	TS	Terminal Blocks	Weidmuller	DK4Q	General Purpose for Thermocouples	CSA
X-Proof Enc (Utility Rm)	R1	Relay R-1	Omron	LY3N	24VDC	CSA,CE, RU
X-Proof Enc (Utility Rm)	TR	Time Relay TR-1	Omron	HY3N	24VDC with Timer Delay	CSA,CE, RU
X-Proof Enc (Utility Rm)	IRG	IrDA Signal Generator	IRDI	200016	Test Signal Generator with Modbus Input, 120VAC	UL
X-Proof Enc (Utility Rm)	CM	Celluar Modem	Sierra Wireless	LS300	Airlink LS300 Cellular Modem for Verizon (925-784-3918)	UL
X-Proof Enc (Utility Rm)	ES	Ethernet Switch	GE	ML600	MultiLink 6 port ethernet switch, 12VDC, 0.8A max.	UL
Utility Room	LT	Area Lighting	Nemalux	GSLEDIP48-CW-WF-BLK-C1D2	24VDC, 1.4A. Class I, Division 2, Group A,B,C,D T5	UL
Utility Room	EJ	Ethernet Receptable	Amphenol	RJFTVX75A1N	ATEX ZONE 2 JAMNUT RECEPTACLE; RJ45 TERMINATION; NICKEL PLATED; CODE A	UL
Utility Room	HD	Heat Detector	Kidde-Fenwal	27120-22	N.C. Open on Temperature Rise. Class I, Division 2, Group A,B,C,D T5	UL
Utility Room	HGD	Hydrogen Gas Detector	RKI Instruments INC	65-2641RK/H2	Hydrogen %LEL, 4-20mA, 2 Programmable Alarm Relays & Fail Relay, Explosion-Proof, Direct Digital Readout	UL
Operator Control Panel	ACK	Audible/Visual Alarm Ack/Silent Push Button	ABB	CP1-10G-10	Momentary push button (N.O.), SPST, IEC60947-5-1	UL
Operator Control Panel	HMI	15" HMI	AIS	HAR15L600-A1FTE-SRT	15" Full IP65 stainless steel display monitor, 1024x768, 1000nits, 1 x RS-232, 2 x USB, 1 x LAN, 1 x 12V DC power (9-36VDC) input, resistive touch screen, VGA, operating temperature of -20c~60c, C1D2 listed, sunlight readable	cUL <sub>US</sub> (Class 1, Div 2 Group A,B,C,D T4)
Operator Control Panel	ESD	ESD Push Button	Appleton	EFDCB175UM1	Heavy Duty, Class I, Group BCD 600VAC. Push to activate and pull to reset.	cUL <sub>US</sub>
Operator Control Panel	AA	AudibleAlarm	e2s	IS-mC1	Audible alarm 24VDC, Class 1 Div 2100dB(A) @ 1m +/- 3dB - Tone 2* [91dB(A) @ 10ft/3m], Combined 24V 30mA	cUL <sub>US</sub> (Class 1, Div 2 Group A,B,C,D T4)
Operator Control Panel	VA	Visual Alarm	e2s	IS-mC1	Array of 6 high intensity Red L.E.D's. Double flash at 2Hz and 1Hz. Combined 24V 30mA	cUL <sub>US</sub> (Class 1, Div 2 Group A,B,C,D T4)
Operator Control Panel	IR	IrDA Signal Transmitter	IRDI	200081	5V IR Signal Transmitter, RS232 Serial DB9 Connetor, J2799 format	Class 1, Div 2 Group A,B,C,D T4

NOTE: MISCELLANEOUS GENERIC ELECTRICAL SUPPLIES ARE NOT LISTED ABOVE

0	ISSUED FOR INTERNAL REVIEW	12FEB2015	BW	GM	GM							PROJECT NUMBER: PL-00742	
1	ISSUED FOR SECOND REVIEW	15MAR2015	BW	GM	GM							DRAWING NUMBER: PL-00742-11-17	
2	ISSUED FOR MATERIAL PROCUREMENT	01MAY2015	BW	GM	GM							SHEET: 1 OF 1	DRAWING TITLE: BILL OF ELECTRICAL MATERIALS
3	ISSUED FOR CONSTRUCTION AFTER TRAILER INSPECTION	08MAY2015	BW	GM	GM								
4	AS-BUILT ISSUED FOR REVIEW & APPROVAL	31AUG2015	BW	GM	GM								
NO.	REMARKS	DATE	DRAWN	CHECKED	APPROVED	NO.	REMARKS	DATE	AUTHOR	REF#	VERSION		
REVISIONS						REFERENCE DRAWINGS/DOCUMENTS							